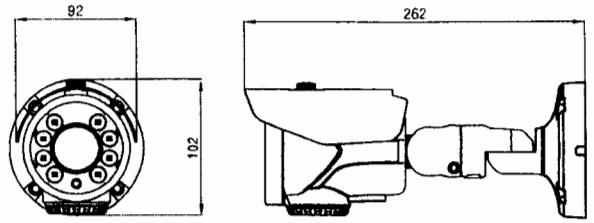
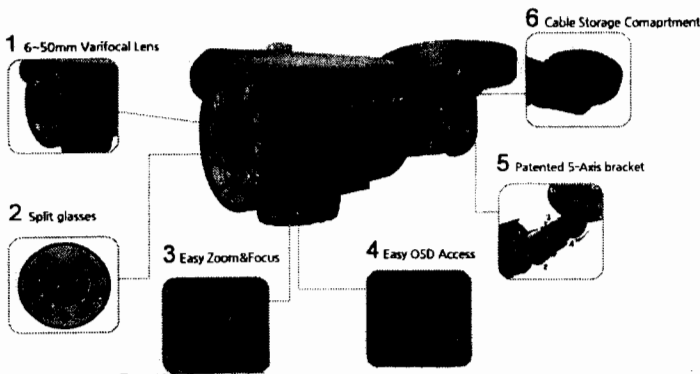


# Owner's Manual

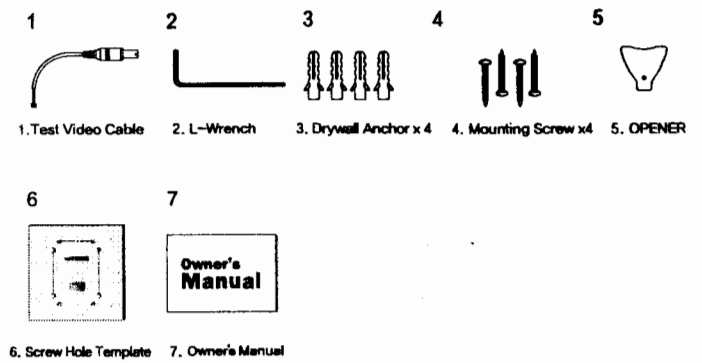
- 1/3" 960H IT CCD
- 6-50mm MEGAPIXEL LENS (FCR)
- Cable Storage Compartment
- 5-Axis bracket
- Split glasses
- Variable-Intensity LED Technology



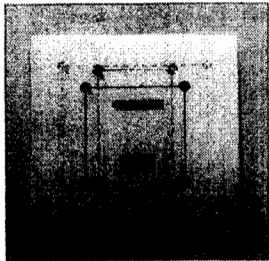
## 2. Features



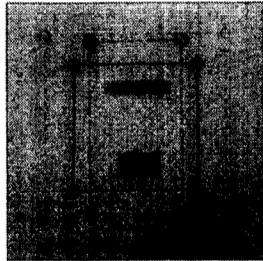
## 3. Contents



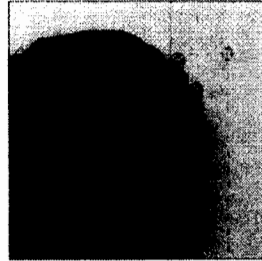
## 4. Installation Guide



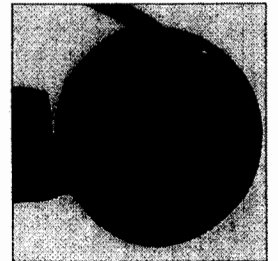
1. Attach included template to the wall



2. Drill 3/16" holes (4X) where indicated "A"

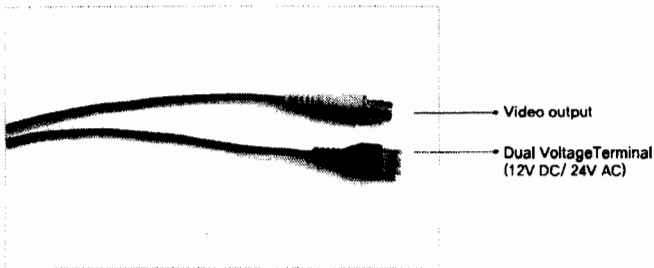


3. Firmly insert included drywall anchors

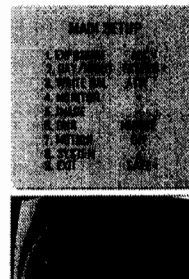


4. Align the bracket holes and tighten all 4 screws

## 5. Cables



## 6. Settings



### Menu Configuration

DISP/LIFE	B/L - A/L
DISP/SET	AUTO/RE - MIRROR - OSD
WHITE BAL	ATM/PLSH - MANUAL
MEMBER	ON/OFF - DIM/BLK - SHARPEN - FREQ/FLY
IRAC	BACKLGT - CONTRAST - PGM/MSGA - MIRROR - PRIVACY - RETURN
ONV	12V/24VDC/24V
MOTION	ON/OFF
SYSTEM	SYSTEM - ON/RE - ON/OFF (LED) - B/LC - HOLD/RE - UNWIND - SPECIAL
EXIT	SAVE/RESTORE/INITIAL/MANUAL

See back for more details.

- Push the SET button > menu open
- Icon 4 has sub menus. Press the set button to enter sub menus.
- 1. Up and Down : Move Cursor
- 2. Left and Right : Value
- 3. Left and Right > Push > Menu > Value
- 4. END : Push > Return

## 7. Specifications

IMAGE SENSOR	1/3" 960H IT CCD	976H x 582V
EFFECTIVE PIXEL	976H x 494V	976H x 582V
SCANNING SYSTEM	2:1 Interlace	
SYNCHRONIZATION	Internal	
HORIZONTAL RESOLUTION	700TV Lines	
VIDEO OUTPUT	COMPOSITE (1.0Vp-p/75Ω)	
S/N (Y Signal)	More Than 50dB	
LENS	6~50mm VARIOFOCAL LENS (OCR - Option)	
ELECTRONIC SHUTTER	1/50 ~ 1/20,000sec	1/50 ~ 1/20,000sec
OSD LANGUAGE	ENGLISH / CHINA	
BACKLIGHT COMPENSATION	OFF / BLC / HLC	
WHITE BALANCE	Auto / Preset / Manual	
DAY & NIGHT	Auto / Day / Night / EXT	
PRIVACY MASKING	ON/OFF (8 zones)	
DNR	OFF / LOW / MIDDLE / HIGH	
SMART IR	OFF / ON	
SENSE UP	OFF / x1 ~ x512	
MOTION	OFF / ON (4 POINTS)	
DEFECT DET	OFF / ON	
IR LED	SUPER IR - 8PC	
INPUT VOLTAGE	DC 12V(±10%) / AC 24V DUAL VOLTAGE (OPTION)	
Power Consumption	DC IR OFF : 180mA(MAX) / DC IR ON : 600mA(MAX) AC IR OFF : 200mA(MAX) / AC IR ON : 550mA(MAX)	
Operating Temp. / Hum.	-10°C ~ +50°C / MAX 90% RH	
Storage Temp. / Hum.	-20°C ~ +60°C / MAX 90% RH	

※ This device complies with part 15 of the FCC Rules. Operation is subject to the following two conditions: (1) This device may not cause harmful interference, and (2) this device must accept any interference received, including interference that may cause undesired operation.

## 8. Installation Caution



- Do not install the camera face towards the direct sun light.
- Do not install camera in an environment where the humidity is high.
- Handle with care. Dropping or sudden impact can damage the camera permanently.
- Do not install or use camera in extreme temperature condition.
- Do not touch the glass part of the lenses with your fingers.
- Cutting or altering a video cable will void the warranty.
- Bad grounding or running camera wires too close from power line may cause video (Ground Loop) interference.
- If product arrives damaged or defective, do not attempt to fix. Please contact your local dealer for RMA service.\*
- This camera may require professional installation. Please contact your local dealer for more information.

\*Design and specifications are subjected to change without notice.

## 9. OSD Tree

