



Super DVR User Manual



Welcome

Thank you for purchasing this Security product.

This user manual is a reference tool.

Please check the items one by one in accordance with the included packing list, if something is missing or damaged, please contact your local retailer.

Please Note: This user manual wrote by whole function model, some models has difference.



Contents

1.	Features.....	6
1.1.	Features.....	6
2.	Installation Guide.....	6
2.1.	Safeguards and Warnings.....	6
3.	Product Appearance.....	7
4.	Device Installation.....	8
4.1.	DVR Connection Diagram.....	8
4.2.	Installing the HDD.....	9
4.3.	Installing the HDD.....	9
4.4.	Alarm input/output connection.....	1 1
5.	Basic Operation.....	1 2
5.1.	Power on and Shut down the DVR.....	1 2
5.2.	Start-Up Wizard.....	1 3
5.3.	Mouse Operation.....	1 4
5.4.	Input Method.....	1 4
5.5.	Keyboard description.....	1 5
5.6.	Navigation Bar.....	1 5
6.	Main Menu.....	1 6
6.1.	Data Inquire and Replay.....	2 1
6.1.1.	Inquire by Time.....	2 2



6.1.2.	Intel Play.....	2 2
6.1.3.	Data Management.....	2 4
6.2.	Backup Management.....	2 5
6.2.1.	Quick Backup.....	2 7
6.2.2.	Manual Backup.....	2 7
6.2.3.	Scheduled Backup.....	2 7
6.3.	Video Settings.....	2 8
6.3.1.	Recording Parameters.....	2 8
6.3.2.	Manual Recording.....	2 9
6.3.3.	Scheduled recording.....	3 0
6.4.	Alarm Settings.....	3 1
6.4.1.	Motion Detect.....	3 1
6.4.2.	Sensor Alarm.....	3 2
6.4.3.	Other Alarms.....	3 3
6.5.	Channel Management.....	3 3
6.5.1	Signal input setting.....	3 3
6.5.2.	Add IP cameras.....	3 5
6.5.3.	Deleting IP cameras.....	3 6
6.5.4.	Other Instructions.....	3 7
6.5.5.	IPC Centralized management.....	3 7
6.6.	Settings Management.....	3 8
6.6.1.	General Settings.....	3 8
6.6.2.	Time settings.....	4 0
6.6.3.	Output.....	4 1



6.6.4.	Network.....	4 6
6.6.5.	COM.....	5 2
6.6.6.	PTZ Setting.....	5 3
6.6.7.	PTZ Control.....	5 4
6.7.	HDD Management.....	5 4
6.7.1.	Basic Information.....	5 4
6.7.2.	HDD Group.....	5 5
6.7.3.	Storage Settings.....	5 6
6.7.4.	SMART.....	5 7
6.7.5.	Channel info.....	5 7
6.8.	System Information.....	5 7
6.8.1.	Device Information.....	5 8
6.8.2.	Channel Status.....	5 8
6.8.3.	Alarm Status.....	5 9
6.8.4.	Online Status.....	6 0
6.8.5.	Log Inquiry.....	6 0
6.9.	System Maintenance.....	6 1
6.9.1.	Quick Settings.....	6 1
6.9.2.	Account.....	6 1
6.9.3.	Factory Default Settings.....	6 2
6.9.4.	Upgrade.....	6 3
6.9.5.	Import and Export.....	6 4
6.9.6.	Schedule Restart.....	6 5
6.9.7.	System Shutdown.....	6 5



7. Introduction to Web View.....	6 6
(A) Access the device via LAN.....	6 6
(B) To access the device via WAN:.....	6 6

1. Features

1.1. Features

The SMART Series DVR is a high performance network video recorder. The DVR supports local preview, multi-window display, local recording storage, mouse shortcut menu operations, remote management and control functions.

2. Installation Guide

2.1. Safeguards and Warnings

1. Electrical safety

Installation and operation should conform to your local electrical safety codes.

The product must be grounded to reduce the risk of electric shock.

We assume no liability or responsibility for any fires or electric shock caused by improper handling or installation.

2. Transportation security

Avoid Heavy stress, violent vibrations, and moisture during transportation, storage, or installation.

3. Warnings

Keep upright. Handle with care.

Do not apply power to the DVR before completing the installation.

Do not place objects on the DVR.

Do not use near water; do not use the device with wet hands.

Do not remove any cable connectors while the device is powered on.

Do not open the DVR's case while the power is on.

4. Qualified technician needed

All examination and repair work should be done by qualified service technicians.

We are not liable for any problems caused by unauthorized modifications or attempted repairs.

5. Operating Environment

The DVR should be installed in a cool, dry place away from direct sunlight, flammable materials, explosive substances, etc.

Required temperature: 14°F ~ 131°F

Required humidity: 15% ~ 85%

Note: Avoid installation in areas that might be disturbed by the sound/noise of the systems fan, such as a bedroom.

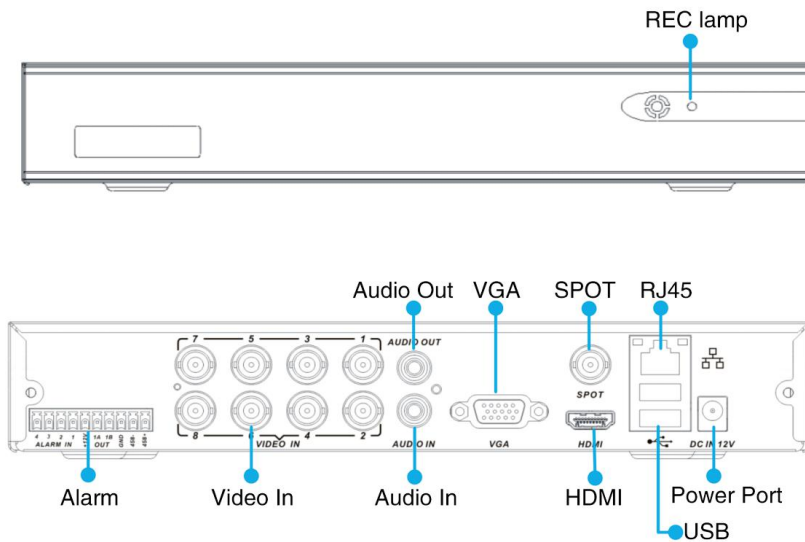
6. Accessories

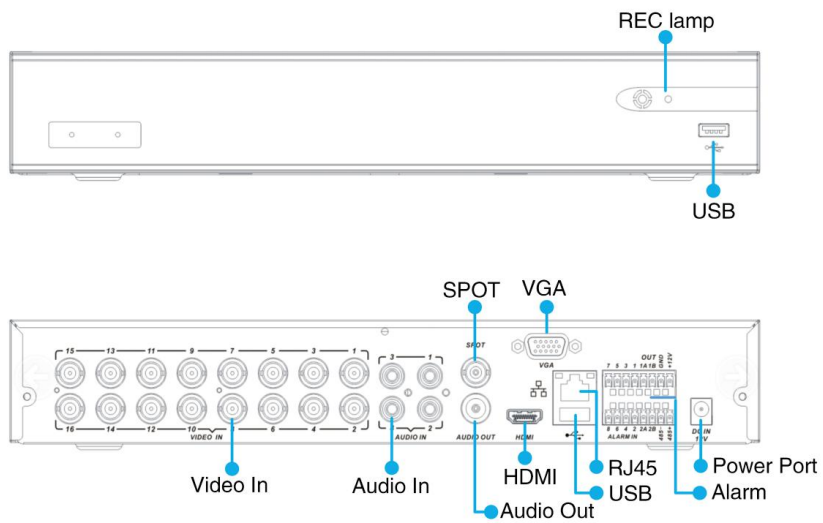
Before installing, please check the package to make sure all the accessories are included. Contact your local retailer immediately if something is broken or missing from your package. Be sure to use only the accessories recommended by manufacturer.

Packing List:

Item	Quantity
DVR	1
Power Adapter	1
DVR Quick Guide	1
Software CD	1
USB Mouse	1
Install Accessories	1

3. Product Appearance

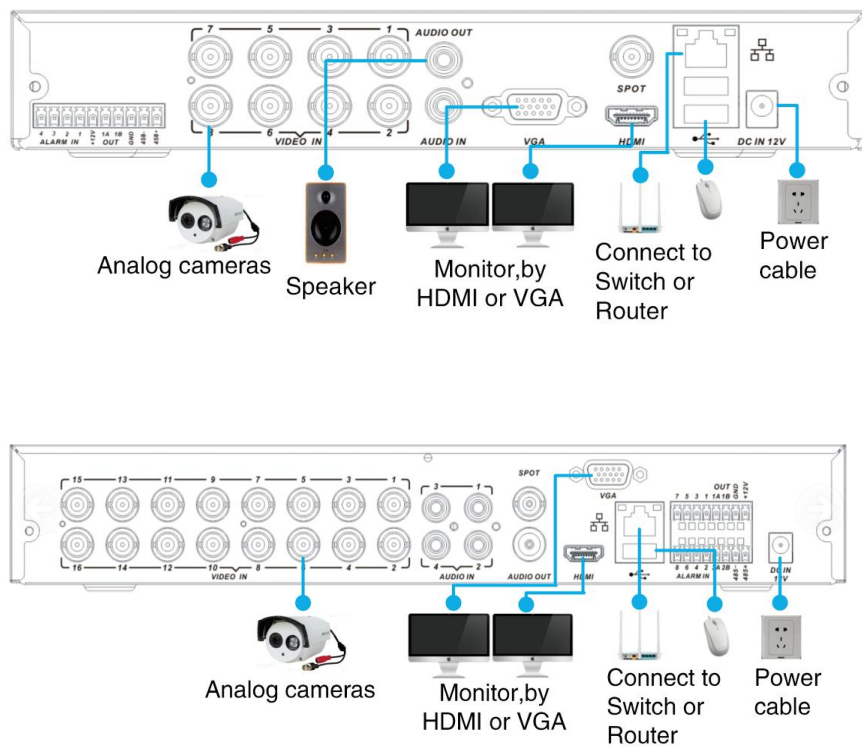




4. Device Installation

4.1. DVR Connection Diagram

Please follow the diagram below when connecting cables and components.

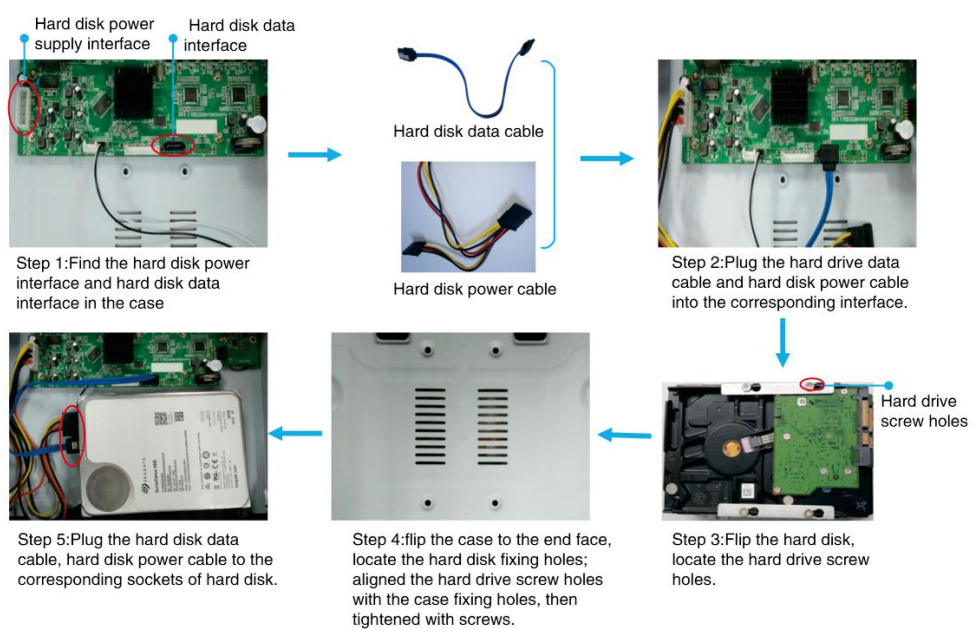


4.2. Installing the HDD

1. Remove the top cover



2. Install the hard disk

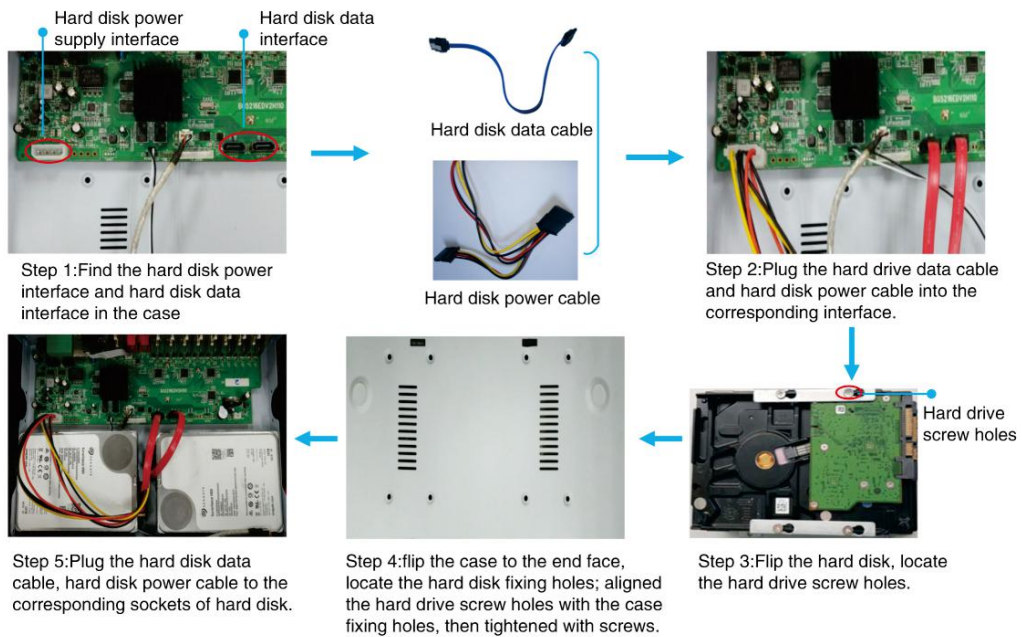


4.3. Installing the HDD

1. remove the top cover



2. Install the hard disk



Please Note: The way to calculate HDD capacity.

HDD recording capacity decides by channel parameters, different channel parameters settings occupies different capacity per unit time, the higher parameters, the bigger capacity needed. Calculating formula is:

$$\text{Occupy capacity per unit time (M/h)} = \text{Mbps} * 3600s / 8$$

Note: 1Mbps=1024Kbps 1MB=8Mb

$$\text{Total capacity (M)} = \text{Channel quantities} * \text{recording time (h)} * \text{occupy capacity per unit time (M/h)}$$

So we can know the formula below:

$$\text{Recording time (h)} = \text{Total capacity (M)} / \text{Occupy capacity per unit time (M/h)} * \text{Channel quantities}$$

For example: 4 channels device and CBR of all channels are 2000Kbps which need to record for one month and the total capacity is:

$$\text{Occupy capacity per unit time} = 2000\text{Kbps} * 3600s / 8 * 1024 = 900\text{MB}$$

$$\text{Needed capacity} = 900\text{MB} * 24h * 30d * 4\text{channels} = 2592\text{GB} = 2.59\text{T}$$

$$\text{Therefore it need to install one 3T HDD} (3\text{T} / (1024 * 1024 * 1024 * 1024)) = 2.66\text{T}$$

Below is the list about recording capacity one hour per channel according to different bitrate for your reference:

Bitrate	File capacity	Bitrate	File capacity
256K	112M	3M	1350M
512K	225M	4M	1800M
768K	337M	5M	2250M
1M	450M	6M	2700M

1.5M	675M	7M	3150M
2M	900M	8M	3600M

Note: This list is just for reference and the file capacity may exist deviation and we are not responsible for it.

HDD manufacturer made 1000 to be 1K and PC system made 1024 to be 1K, capacity in system is less than HDD manufacturer marked.

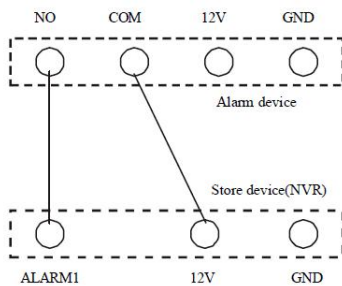
HDD manufacturer:1T=1000G, 1G=1000M, 1M=1000K, 1K=1000.

HDD capacity needs change from manufacturer to PC system. For example,
 $1T(\text{manufacturer})=1000G/(1024*1024*1024)=931G(\text{PC system}), 500G=500G/(1024*1024*1024)=465G.$

4.4. Alarm input/output connection

1. Alarm input connection with normal on like figure 1

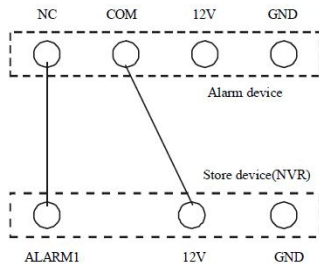
NO represent the alertor is Normally Open, in normal status, after connection the alertor as figure 1, the voltage of ALARM1 is 0V. when there is alarm triggered, it equals that the switch between the NO and COM closed, at this moment the voltage of ALARM1 is 12V, it is much more than 0.8V, therefor alarm.



(figure 1)

2. Alarm input connection with normal off like figure 2

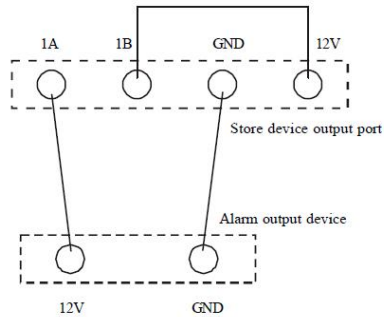
NC represent the alertor is Normally Close, in normal status, after connection the alertor as figure 2, the voltage of ALARM is 12 V. when there is alarm triggered, it equals that the switch between the NC and COM opened, at this moment the voltage of ALARM is 0V, it is much less than 0.8v, therefor alarm.



(figure 2)

3. Alarm output connection

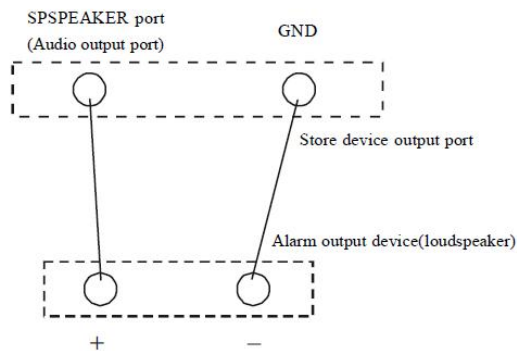
There is a little difference because of the various alertor, but in generally speaking there are two kinds: passive alarm output connection and active alarm output connection. As to the passive output alarm device, the connection is as figure 3(the usual connection)



(figure 3)

Active output alarm device has power itself, such as loud speaker:between the cathode of Capacitor connect a wire to the AUDIO OUT; the another port of alertor connect to the GND of AUDIO OUT, as figure 4.

Note: Only-P serials support the alarm.



(figure 4)

5. Basic Operation

5.1. Power on and Shut down the DVR

Power on the DVR

After plugging power cable, DVR will start up automatically.It can click right key anytime to quit when operate.

Shut down the DVR

Select the "Power Off" by right click the mouse, follow the on-screen prompt to shut down the system, then you can safely disconnect the power supply from the device.

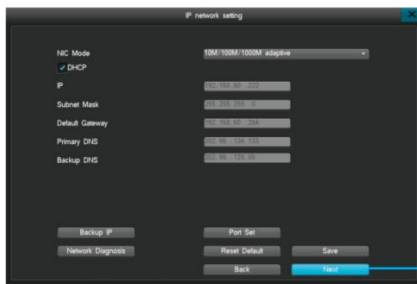
5.2. Start-Up Wizard



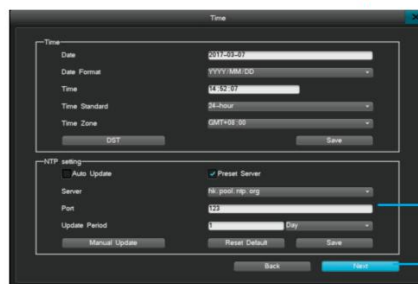
Click "Yes" to enter the initial start wizard.



Step 1: Scan the QR code to install the Mobile App



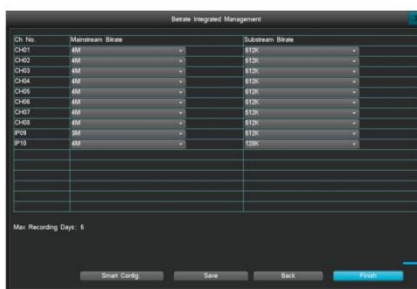
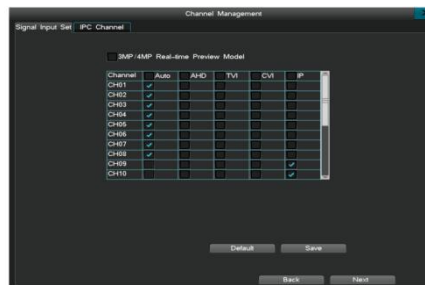
Step 4: Set the DVR's IP address. If you don't know it, check "DHCP"



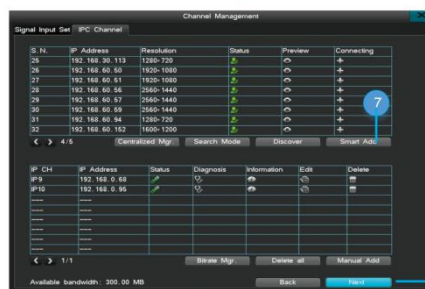
Step 2: Set your Time and Save it
Step 3: Click "Next" if nothing else to be set



Step 5: If you are using a new hard drive, please format it first.
Step 6: After format the HDD, click "Next"



Step 9: Set the Bitrate of each channel, you can also click "Smart Config" to set the bitrate automatically.
After all these steps, click "Finish"



Step 7: Click "Smart Add" to add the IP Camera.
Step 8: Click "Next" without other configuration.

5.3. Mouse Operation

Control the device with the mouse after connecting it to the USB port.




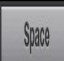




Item	Command	Instructions
Left Key	Single Click	<ul style="list-style-type: none"> In Preview: Select current screen and display context menu. In Menu: Select, confirm.
	Double Click	<ul style="list-style-type: none"> In Preview or playback mode: Switch between single- and multi-screen display. To play a selected segment of a video while performing a data inquiry or while in the Back-up management interface. Display Calendars when inputting dates.
	Click and Drag	<ul style="list-style-type: none"> To set motion sensitive areas, in the motion region settings. Adjust Brightness, contrast, saturation. Select the digital zoom range.
Right Key	Single Click	<ul style="list-style-type: none"> In Preview: Show the pop-up menu. In Menu: Exit current menu, go back to the previous page/layer.
Scroll	Scroll Up	<ul style="list-style-type: none"> In a selection box: Scroll up the options. In a scroll bar: Scroll up the page.
	Scroll Down	<ul style="list-style-type: none"> In a selection box: Scroll up the options. In a scroll bar: Scroll up the page.

5.4. Input Method

The virtual keyboard is as shown below:



5.5. Keyboard description




Icon	Description	Icon	Description
	Current input keyboard is English. Click this icon to switch to the special characters keyboard.		Delete
	Current input keyboard is English. Click the icon to switch to the character keyboard.		Space
	Click to activate capitalization mode.		Current input keyboard is the special characters keyboard. Click to switch to the number keypad
	Shift Keyboard		Current input is number keypad. Click to switch to the English keyboard.

5.6. Navigation Bar

The Navigation bar will appear as shown below:



Instructions:

- 1) Menu icon: Single click on the  icon to enter the main menu.
- 2) Administrator account log in/log out: After powering on the device, single-click  to log into the administrator account, single-click the  icon to log out of the account. The screen will be locked after you log out.

Please Note:

DVR is free login by default and it doesn't input username and password please set security password via System Maintenance>Account to disable Free-login.

- a. Default username: "admin"; Default password: "888888"
- b. The system will automatically lock itself after three failed login attempt. When the device is locked, you need to wait 60 seconds to try again.
- c. At the login interface, left-click once on the mouse to call up the numbers keyboard, then right-click to hide the virtual keyboard.



Tip: For your security, we suggest you to change the default password.

3) USB/temperature icon: Move mouse to this icon "i" will display USB/temperature icon.

4) Alarm: Single-click on "🔔" directs you to the alarm status interface. You can check alarm report information and clear alarm notifications.

5) Network diagnosis and repair: Single click on "🌐" to enter the internet diagnosis interface. You can start a diagnosis and/or network repair.

6) Multi-view : Single-click on "📺" to adjust the live view screen; single click "🔍" or "📏" to adjust the channel layout.

7) To show/hide navigation bar: Single click "🏠"

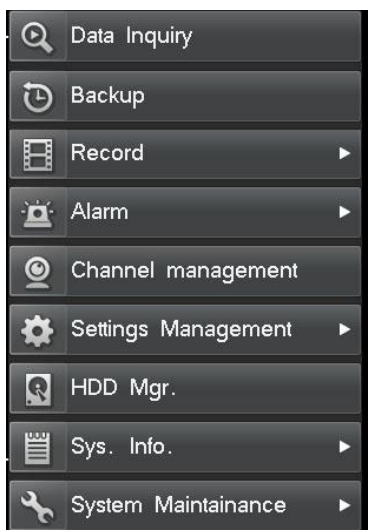
8) Quick playback: Single-click on "🔍" to quickly playback the video from the last five minutes.

9) Cloud service: Single click on the icon "☁️" to enter the cloud service interface. You can switch on/off the IVView feature, scan the QR code, and download the mobile App.

6. Main Menu

After log in, left-click the "🏠" icon on the navigation bar or right-click on the live view page and choose "main menu"

The items on the main menu are as below:



Menu	Brief Description	
Data Inquiries	Time Inquiry	Search and Playback the recorded video by entering a specific date and time
	Data Management	To manage the recorded files; you can lock/unlock file from deletion
Backup	Backup	To format storage devices; search and backup recorded video to external HDD or USB
Record	Record Parameters	1. Select Channel (Select a camera)
		2.Stream type: Mainstream/ substream
		3.Video encoding: H.264
		4.Resolution: 2560*1440/2304*1296/1920*1080/1280*1024/1280*960/ 1280*720 (depending on the model of IPC connected)
		5. Image quality: Highest/second-highest/ high/medium/ low/lowest
		6.Video frame rate: 1-25/30
		7.Bitrate type: VBR
		8.Bitrate stream: 45K,60K,75K, 90K,100K,128K,256K,512K,768K,1M,1.5M, 2M, 3M, 4M, 5M, 6M, 7M, 8M, custom (depending on the model of IPC connected)
		9. Audio: Open Audio Record (the IP Camera need to support this function), Different models support different analog audio input channels
		10.Motion/Alarm Pre-record : 5-30 seconds,
	11.Motion /Alarm Delay-record : 1-180 seconds alert: 1-180 seconds	
Manual	Manually turn on recording of the selected channel	
Schedule	Set a recording schedule of a channel. copy the settings from one channel to another channel by clicking "Copy"	
	Motion	1. Select a channel.

Alarm		2. Continuous Alarm: Alarm will sound until you stop it manually, if motion is detected.
		3. Set Motion sensitivity Level; Highest/Higher/High/Medium/Lower
		4. Set a motion-detect region.
		5. Linkage setting: a. Trigger Recording/Screen shots: when Motion triggers an alarm on one channel, you can set other channels to start recording at the same time. b. Enable email notifications : when an alarm occurs, the DVR will send an email to your email automatically, if email parameters are set in the email setting
	Sensor	You can connect a sensor to the DVR; e.g smoke detector.
	Other Alarms	Enable or disable other kind of alarms: HDD error, Video Loss, Network Disconnect, HDD Full.
	Manual Alarm	Manually open the external alarm.
Channel Management	IPC Channel	1. Automatically searches the IP camera on the local network.
		2. Add IP Camera one by one.
		3. Show the IP address of each camera.
		4. Delete IP camera one by one.
		5. Check status of each camera.
		6. Edit camera's IP address, change protocol or port number.
		7. Diagnose/check the network connection of IP cameras.
	Signal Input Set	Signal input setting
Settings Management	General	1.Host name: Create a name for the DVR.
		2.Host ID: Controller host number or serial keyboard address code.
		3.Video Standard: NTSC/PAL

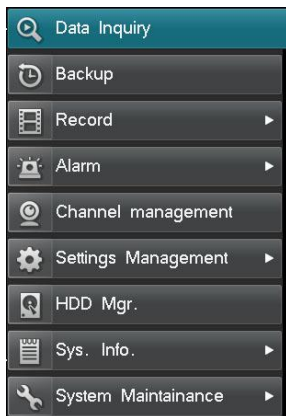
Settings Management	Time	4.Resolution:1280*1024/1440*900/1280*720/1920*1080/2560*1600@60/3840*2160	
		5.Supported languages: English	
		6.Auto lock:/1/3/5/10 minutes	
		7. Audio Device: MIC/Sound Pickup	
		8.Open adaptive optimal resolution.	
		9.Turn on/off the “Display power on wizard”	
		10. Enable/disable system beep.	
		11.Restore factory default.	
		1. Time setting: Manually edit the time setting, change the date display format and time standard; or set the DST.	
		2. NTP setting: Automatically update time via internet.	
		Output	Channel Setting
2. Set Video Mask Area.			
3. Video Adjustment: brightness, contrast, saturation.			
4. Set Channel name Position.			
5. Set channel name and time display			
Sequence Setting	Set sequence; choose channel, intervals, and cycle.		
SPOT Settings	Set SPOT sequence		
Output Mode	Standard/Bright/Soft/Bright-colored/Sharp		
Network	Network	Manually set DVR IP address or enable DHCP. Backup IP settings, port	

		set, and Network diagnosis.
	DDNS	Choose a server; set username and password, DDNS test.
	PPPOE	Set up the dial up username and password to connect via PPPOE.
	Email Settings	Set email server, email account name, password and email address, receiving email address, ports, Period, SSL, email testing.
	Advanced Settings	Set up UPNP or port forwarding. Set FTP Upload.
	Cloud Services	1. Download the mobile App, Scan the QR Code to add your device to the mobile App.
		2. Enable or Disable ivvew: Enable or Disable Cloud Service.
	COM	COM port parameters setting
	PTZ Setting	1.Channel Name
		2.Protocol
		3.Address Code
		4.Communication Port:RS485/AHD485
HDD Mgr(HDD Management)	Basic Info	1. Show hard disk and USB disk information.
		2. Set HDD.
		3. Format the HDD or USB drive.
	HDD Group	Assign cameras to different hard drive groups. Display disk group total/remaining capacity
	Storage Setting	Set hard disk overwrite, trigger time, the number of days of recorded video available, and other parameters.
SMART	Displays hard disk capacity, the serial number, hardware version, temperature, current health condition, SMART and other attributes.	
	Device Information	Displays the device model, channel number, software version, GUI version, IP address, MAC address, language, resolution and current user.

System Information	Channel Status	Display all IP addresses of the IP Cameras, connecting protocols, bitrate and video resolution.
	Alarm Status	Displays Alarm status of each channel, such as motion-detect and video loss. Also displays hard disk errors, Network loss, and over-temperature.
	Online Status	Displays all current accounts or users logged in to the DVR, IP address, login time.
	Log Inquiry	Inquire and display system log; backup system log.
System Maintenance	Quick Setting	Quickly set up time, Network, HDD management, video parameters, IPC management and cloud services.
	Account	1. Add/delete account/groups.
		2. Edit User privileges or set user privileges for remote access.
		3. Free-Login (no password required when login from the console).
	Restore to Default	Restore all settings back to factory default.
	Upgrade	Upgrade via FTP or USB.
	Schedule Restart	Set system restart schedule.
System Shutdown	Log out, restart, or shutdown.	

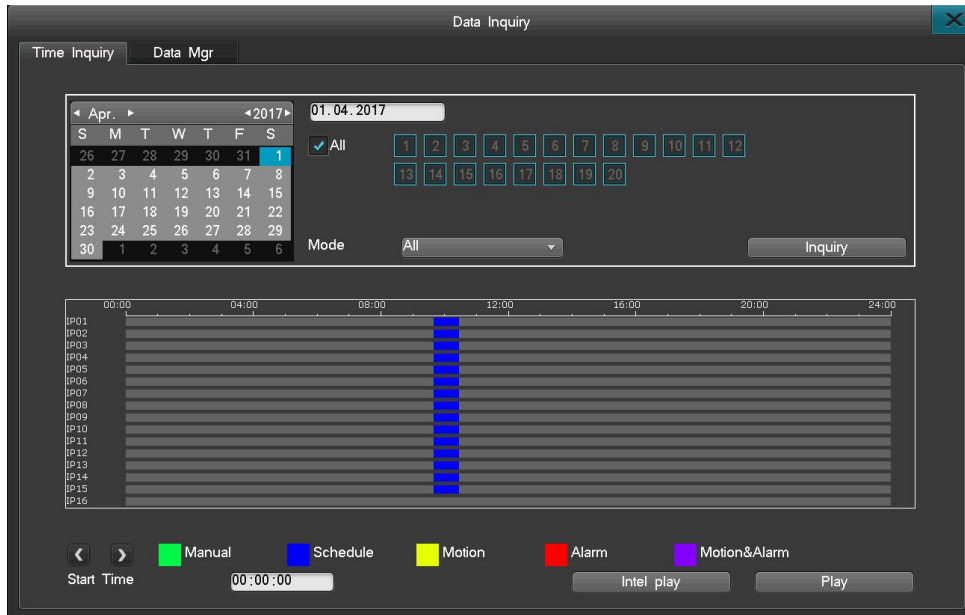
6.1. Data Inquire and Replay

Single-click on “Data Inquiry”, as shown below:



6.1.1. Inquire by Time

From the “Data Inquiry” interface, choose a date then click “Inquiry”. It will then start a graphical search, choose the target channel and recording mode it and can search the recording of all channel,as shown below:

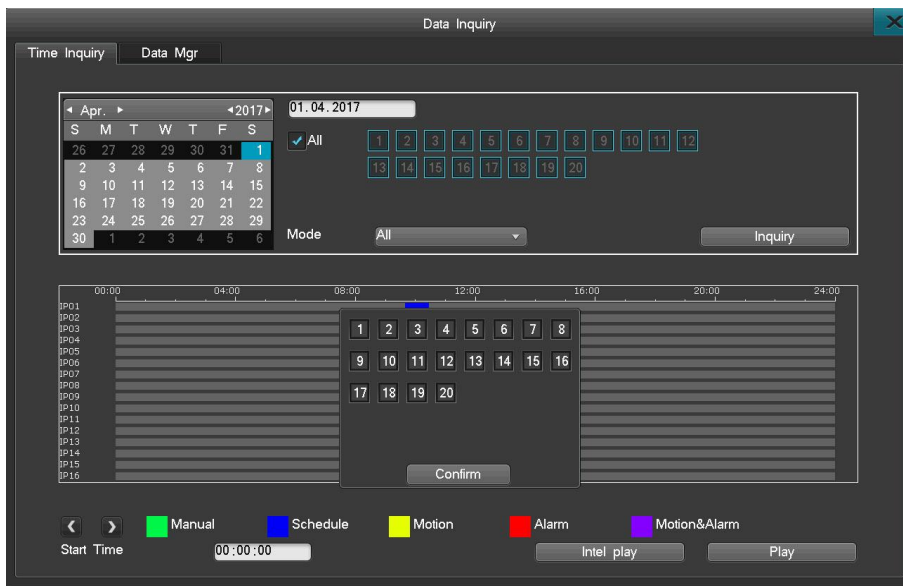


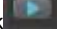
- Single Channel Playback: you can choose one channel or double click the one channel’s recording bar directly, it will show playback.
- You can only choose one channel playback or choose all channel playback.
- If search data by recording mode, you can only see single channel data, and so does playback.
- Left-click on the graphical interface then enter a specific starting time in the “Starting Time” box, then click “Play” to start playing the video.
- Or Left-click the graphical interface twice to start playing the video. The white vertical line marks the start point.
- To enlarge the video when playing, simply move the cursor onto the time-line, and then left-click on the enlarge icon once to enlarge the video display of that specific time point. To restore normal view, move the cursor to the time line and left click the minimize icon.
- A dark gray square on the calendar means that there are video files on that date. A pure gray square indicates that than there are no video files of that date (The light blue square indicates the selected date on the calendar).
- A green square stands for manual recording, blue indicates scheduled recording, yellow for motion-detection recording and red for alarm recording.

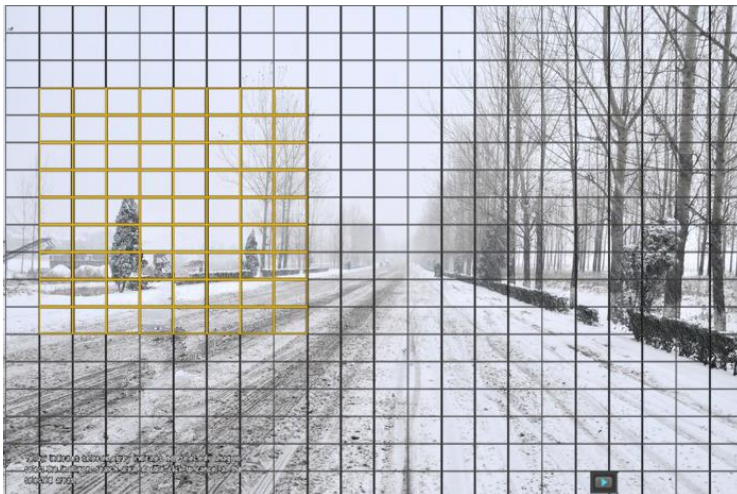
6.1.2. Intel Play

Intel Play means Intelligent Playback, you can select a zone in the window and click playback, it will search all the motion that has been detected in this zone, and playback it quickly,for Analog Cameras, all can support this function, but for IP Cameras, it is based on IP Camera’s functionality.

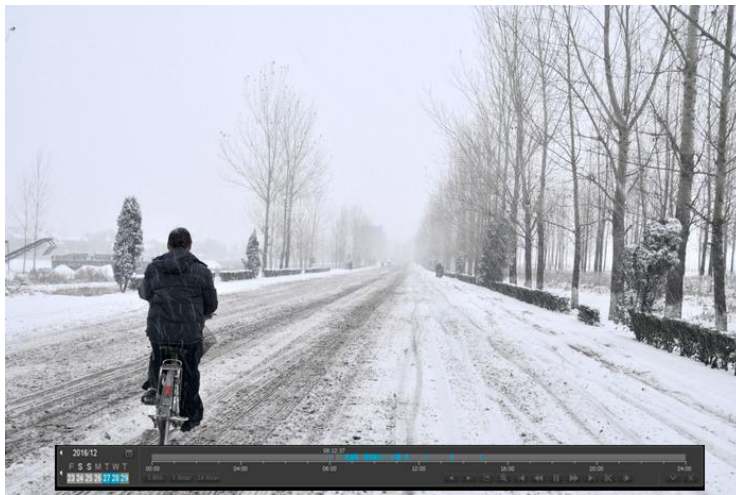
- 1) Click “Intel Play” and choose a channel and confirm.



2) You can select a zone, hold the mouse left key and drag it to select a zone, click 



3) The DVR will show all the motion that been detected in this zone.



6.1.3. Data Management

From the “Data Management” interface, you can check the video file based on its channel number or video type, shown here:

CH	Mode	Time	Size	HDD NO.	Status
CH01	All	08-03-2017 10:49:08-10:49:25	25.26MB	HDD01	U
CH01	All	08-03-2017 11:42:54-11:43:14	61.83MB	HDD01	U
CH02	All	08-03-2017 11:42:55-11:43:14	61.23MB	HDD01	U
CH03	All	08-03-2017 10:49:09-10:49:25	24.66MB	HDD01	U
CH03	All	08-03-2017 11:42:56-11:43:14	61.23MB	HDD01	U
CH04	All	08-03-2017 10:51:46-11:41:12	1.47GB	HDD01	U
CH04	All	08-03-2017 10:49:31-10:51:46	68.80MB	HDD01	U
CH04	All	08-03-2017 11:42:57-11:43:15	61.23MB	HDD01	U
CH06	All	08-03-2017 10:51:45-11:41:12	1.09GB	HDD01	U
CH06	All	08-03-2017 10:49:37-10:51:45	49.73MB	HDD01	U

- Select the desired channel.
- Select the video type of the channel on the drop-down menu.
- Double-click the file segment to start playback.
- Click on the next/last page icon to view additional pages.
- Select a segment to lock down or unlock.

The playback features are as follows:

- Playback: Support single Channel playback.

- Right-click the mouse to display or minimize the playback control bar.
- Area zooming is supported during playback in single-screen display. Please follow the instructions below for area zooming:

- I. Enter the playback screen and then select the enlarge button.
- II. Select the area you wish to enlarge on the small screen display.
- III. Select/enter the zooming scale to enlarge that area, right-click to deselect the zooming area.

- During playback, you can select a segment of video to back up to a flash drive.

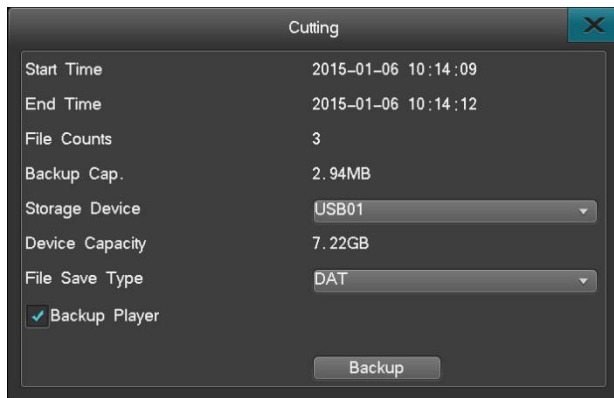
I. Display video data.

II. Select desired video segment.

A. Click on the edit button “” on the player to set a start point.

B. Click on the edit button “” again to set an end point.

C. The edit backup settings window will then automatically pop up, as shown here:



D. Set all related parameters (storage device, file type, backup player), click the backup button to complete the process.

DAT data can be searched and played back through the Backup Management settings interface on the DVR, however on a personal computer, a video player that supports DAT format is needed.

6.2. Backup Management

This system supports two backup methods, one is USB and another one is mobile HDD. It is better to use backup device when power on rather than plug in before power on.

1. Backing up files to a remote computer via the internet. Please see the IE IP Camera guide for internet backup settings instructions.
2. Backing up to a local storage disk. Hot swapping is supported for flash drive and external hard drives, The backup disk must be in the FAT32 format.
3. To enter the backup management interface, click on “Main menu”→ “Backup Management”.



Backup channel: Choose the channels to back up.

Query time: Enter a start and end time of the file to back up, the maximum time period is one month.

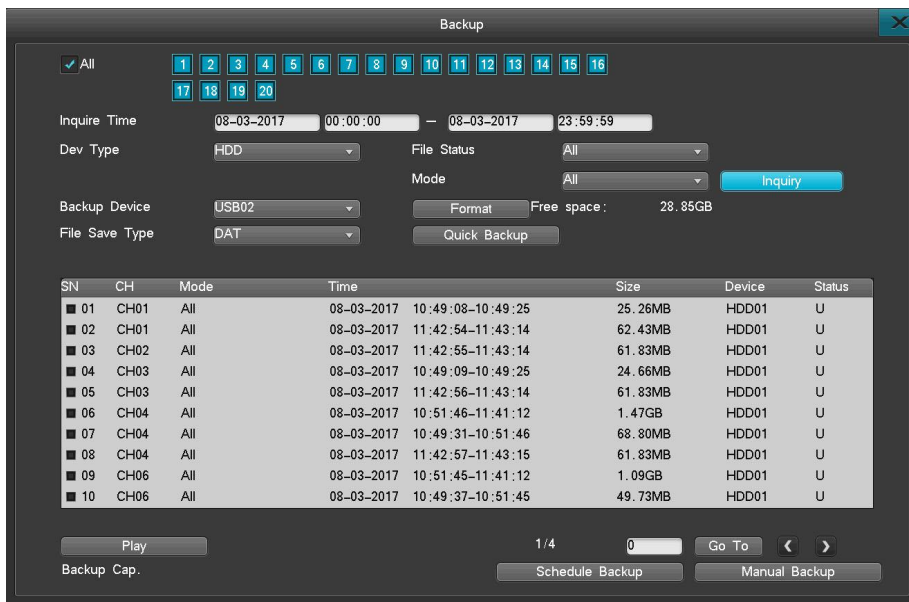
Backup device type: Choose the device type to query; local HDD storage data or stored files on other listed devices.

File status: Locked/unlocked.

File type: Choose the type of the video to be backed up.

Backup device: Choose the device to back up files to.

File types: DAT, AVI.



Please Note:

1. You must choose a file type before backing up any data or viewing any data from a backup device.
2. Playback in the DVR will be in .DAT file type only.

6.2.1. Quick Backup

1. In the backup management interface; choose the channels and file status, check the box for recording, click “Quick Backup”.

2. To complete the process, select ‘Yes’ at the ‘Confirm to Start Backup’ pop up.

Please Note: Execute an quick backup to backup all checked-up data.

6.2.2. Manual Backup

- **Specific backup instructions:**

1. Choose the channel, file status, select the desired video, click “Check”.

2. Select the files to back up, and select “Manual Backup” to enter the backup interface.

3. To start importing all files and complete the backup process, select ‘Yes’ at the ‘Confirm to Start Backup’ pop up.

4. If there's any video, it can be instantly backed up, no waiting period required.

5. To confirm on the backup file, select the desired file by clicking “Play” to start playing the video.

(Please Note: The total size of all current files combined is displayed at the bottom-left corner “Total Backup File Size ”)

- **Backup File Display**

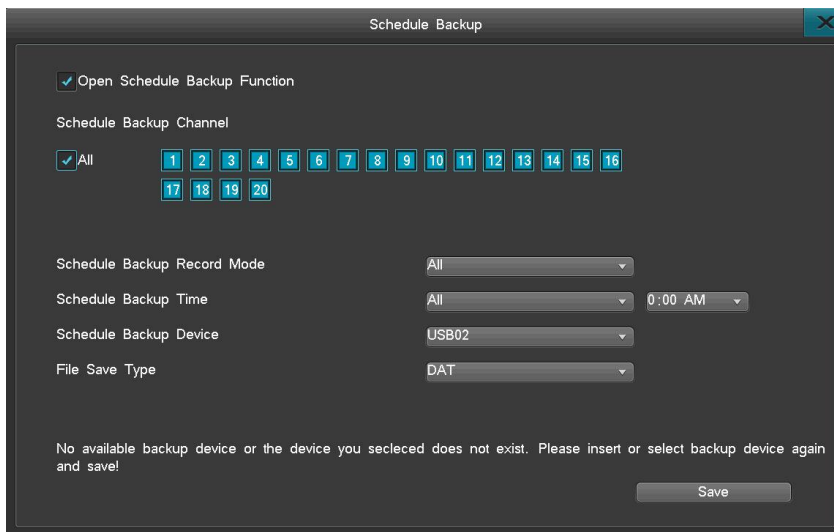
1. On the backup management interface, select the devices to back up and then click on “Check”.

2. Choose the confirmed video file data and then click on “Play”.

(Please Note: Backed-up files can only be played back on a single track. Data cannot be dragged to move around during playback. Also, the system will automatically backup the video player when you choose to backup DAT video files.)

6.2.3. Scheduled Backup

Click “Scheduled Backup” on the Backup Management interface, as shown here:

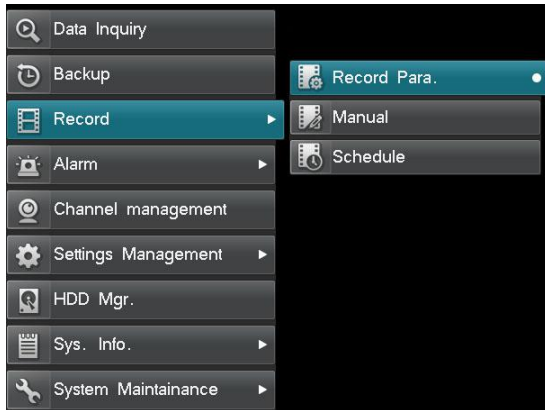


The options include: Turn on scheduled backup after start up, scheduled backup channel selection, video type selection, regular backup time point selection, backup device, overwrite mode, file type.

The host will then start automatic backup on the preset time cycle.

6.3. Video Settings

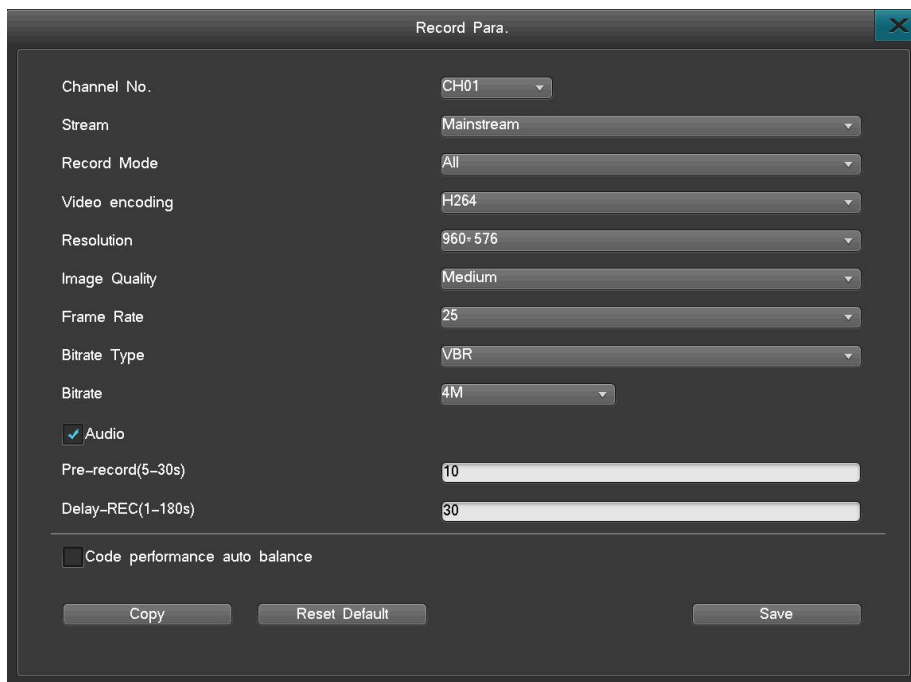
Video settings include: Recording parameters, manual recording and schedule recording sub menu, as shown below:



6.3.1. Recording Parameters

When using the DVR to record, it is important to set up the video parameters beforehand. Video parameters affect playback and disk space consumption. After logging in, follow the path of “Record”→ “Record Parameters” to enter the video parameter setting interface.

Note: When you have set the parameter in IP Camera web interface, please click “refresh” first to synchronize the parameter to the DVR.



- Channel number: Select from the drop-down menu.
- Bi-stream: Select the bit stream type (mainstream/sub stream).
- Resolution: The resolution range is determined by the connected IP camera. Not all model cameras will have the same resolution options.
- Image Quality: six levels (highest, second highest, high, medium, low, lowest).
- Frame per second: If set resolution as 960H, Fps can be up to 25fps; if choose resolution as 1080P, Fps can be 15 fps; if choose resolution as 3MP, fps can be 8fps; if choose resolution as 4MP, fps can be 6 fps.
- Bitrate: Max: 4M, Based on the connected IPC, a customized bitrate should be within the supported bitrate range of the IPC.
- Pre-record: The DVR will record video before the event occurs. The value ranges from 5 to 30 seconds depending on the bitrate stream.
- Delay-REC: The DVR will continue to record after the event has ended for a defined value. The value ranges from 1 to 180 seconds.

Bitrate	8M	6M	4M	3M	2M	1M	512K
Min. Record Time	4s	5.3s	8s	10.7s	16s	30s	30s

- Click “Copy” to copy that channels parameters to other channels.

PLASE NOTE:

- 1)If unckeck Recording Para Auto Set: You can set its fps manually, for 906H: 2-25fps, for 1080P: 2-15fps, for 3MP:2-8fps, for 4MP:2-6fps.
- 2)If check Recording Para Auto Set: it can set channel’s resolution and fps automatically, but you can’t change it manually.
- 3)When enable change to disable Auto Set, All the parameters will force to the suitable range.
- 4)Recording Para Auto Set is open by default

6.3.2. Manual Recording

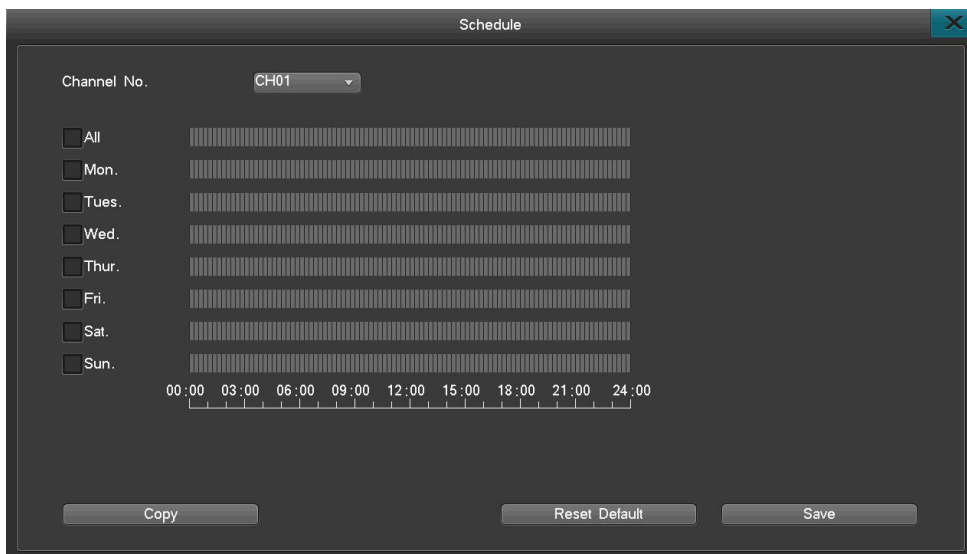
The manual recording interface, as shown below:



- The channel buttons are displayed in blue when the feature is turned on and gray when the feature's turned off.
- Once the manual recording feature is activated, it will keep recording until turned off. If there is an abrupt power loss, recording will stop and restart automatically once the power is back on.

6.3.3. Scheduled recording

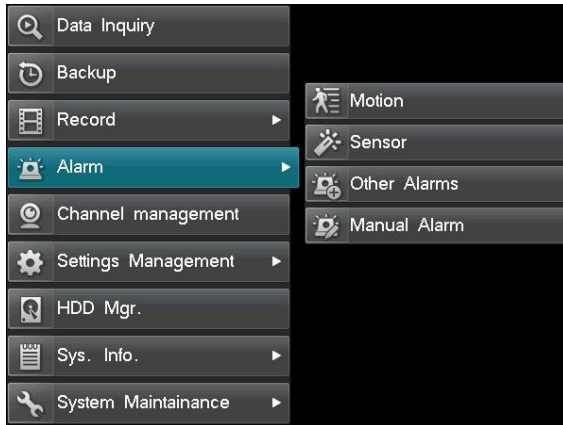
After logging in, click “Record” > “Schedule” to enter the scheduled recording settings interface, as shown below:



1. Channel number: Select the corresponding channel.
2. Follow the instructions below to set up the time schedule:
 - Left-click to select the day to be recorded. You can select multiple days, select all for every day, or a particular day of the week, depending on your needs.
 - Click and Drag the left mouse key to set up a recording time segment (or double-click to enter the interface to adjust). You can have up to six different time segments (Please Note: by default the time is displayed in 15 minute increments).
 - Click “Save” to complete the process. Click “Copy” to copy all settings to all channels.

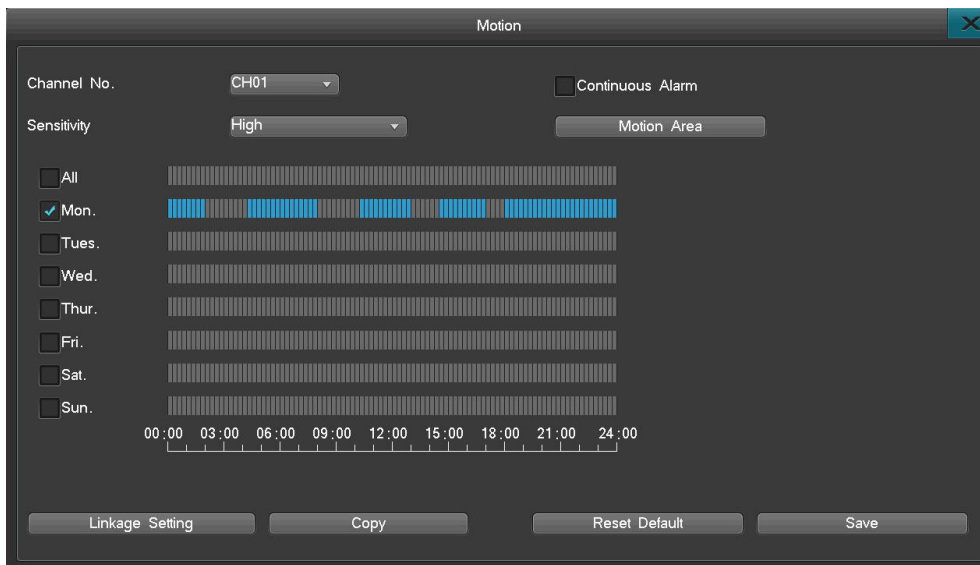
6.4. Alarm Settings

Alarm Settings menu includes three sub menus (Motion, Alarm Output, Other alarms), as shown here:



6.4.1. Motion Detect

After logging in, click on “Alarm” > “Motion” to enter the motion-detection settings interface, as shown below:



Setting up the motion detection feature:

1. After logging in, click “Record” → “Record Parameters”, set up pre-record and delay-record parameter.
2. Select the channel to record
3. Motion detection sensitivity levels: Levels available from lowest to highest. When there's any motion detected on the channel, the system will automatically start recording and send off an alarm. On the lowest sensitivity level, the system will only send off alarms when there's significant activity detected.
4. Motion Area: Set the detecting point by left-clicking on the preview screen and dragging the cursor across desired squares, release the left mouse key and the highlighted squares are the detection area. Right-click on the

mouse to return to the motion-detection interface to save the setting. Left-click twice to deselect the area. Yellow area indicates the detection area.

5. Set the schedule (please refer to the instructions from schedule recording).

6. Linkage Setting:

- Trigger video: Choose which channel will record when motion is triggered.
- Linkage Setting: Enables e-Mail Alerts/Notifications.

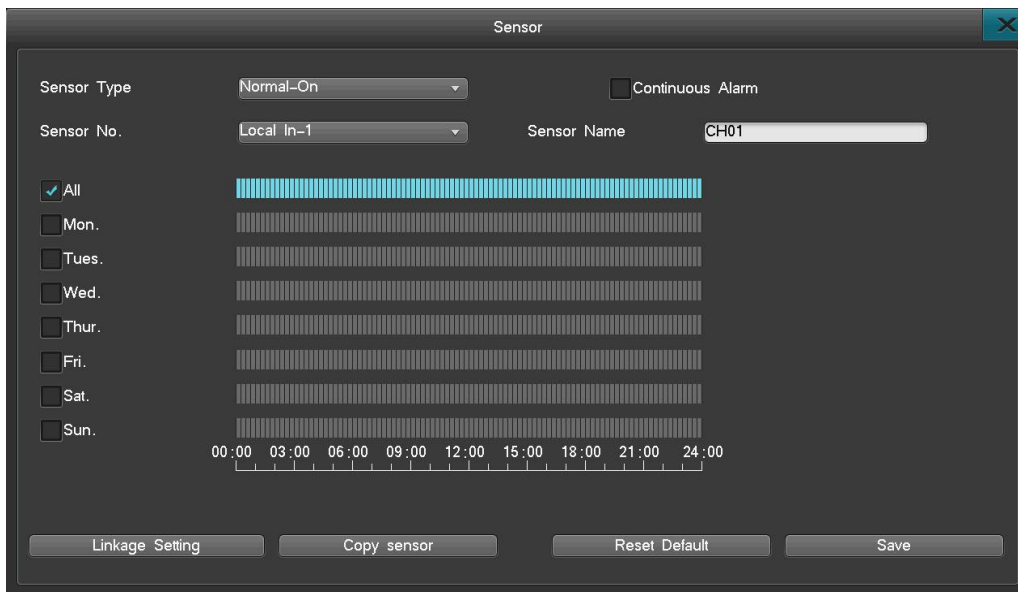
Please Note: Once continuous alarm is turned on, the system will keep sending off the alarm when detecting motion. If this feature is turned off, then there will only be a one-time report throughout the entire recording cycle despite how many times activities are detected.

6.4.2. Sensor Alarm

Alarm record setting instructions:

Step 1. After login, navigate to "Main Menu"-> "Record"-> "Record Para," to set pre-record and post-record time.

Step 2. Navigate to Main Menu -> Alarm -> Sensor Alarm to set the alarm record setting. Please use below picture for reference.



Step.3 Choose Normal-On or Normal close base on the device you are using.

Step.4 Choose the sensor number.

Step.5 Set up the alarm schedule. The schedule can be every day, on a particular day, or certain time frame

Step.6 Set up the desire channel to be recorded when sensor is triggered in the linkage setting.

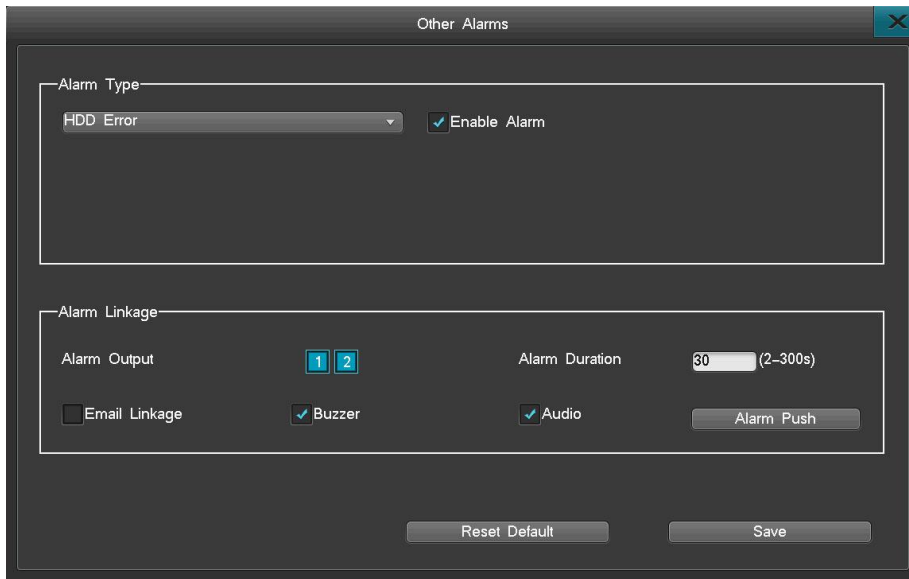
Step.7 Blue icon in the output setting indicate the alarm output is enabled; gray indicate the feature is disabled.

Step.8 Click on the email check box to enable email.

Please Note: Once continuous alarm is turned on, and the sensor alarm triggered, it will continuous alarm. And in the alarm status interface, the continuous alarm cannot be cleared manually.

6.4.3. Other Alarms

After logging in, click “Record” > “Recording Parameters” and enter the Other Alarms interface, as shown below:



- Alarm types: HDD errors, Video lost, network disconnect, Over Temperature, HDD Full.
- Alarm linkage: Whenever an alarm is triggered, this feature will automatically connect to your email and upload the alarm file to your inbox. This feature is supported in all the alarm types.

Please Note: If you want to connect and upload via E-mail, please consult the 6.6.4.4 section to set up this feature.

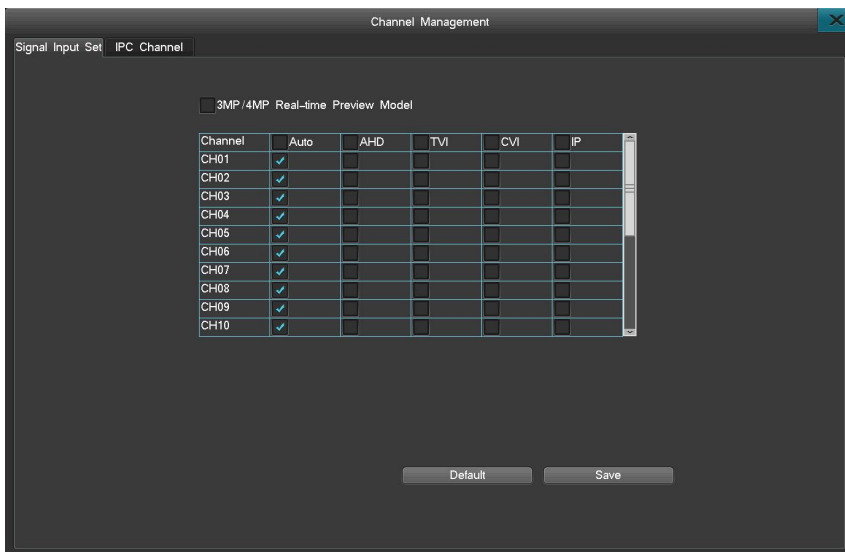
6.5. Channel Management

After logging in, click “Main Menu”> “IPC Management” to enter the Channel Management interface, as shown here:

6.5.1 Signal input setting

This product support AHD/TVI/CVI/IP/Analog hybrid signal input.

This product can switch Analog to IP, For 4CH product, it can support 1 extra IP, 8CH Product, it can support 2 extra IP, 16CH product, it can support 4 extra IP, all the product can switch Analog to IP, that means for 4CH product, it can maximum support 5 channel IP, for 8CH product, it can maximum support 10CH IP, for 16CH product, it can support maximum 20CH IP.



6. 5. 1. 1 Choose input signal

you can have 5 options: Auto, AHD, TVI, CVI, IP

- Auto: The system will recognize the camera signal automatically
- AHD: If check this option, this channel can only support AHD cameras
- TVI: If check this option, this channel can only support TVI cameras
- CVI : If check this option, this channel can only support CVI cameras
- IP: If check this option, this channel can only support IP cameras

Note:

- 1) When change&save the signal mode successfully, the system will reboot.
- 2) The input signal and recording fps can match automatically. (the resolution goes lower, the fps can go higher). 1080P: 15fps; 3M:8fps; 4M: 6fps.

6. 5. 1. 2 3MP/4MP real time view

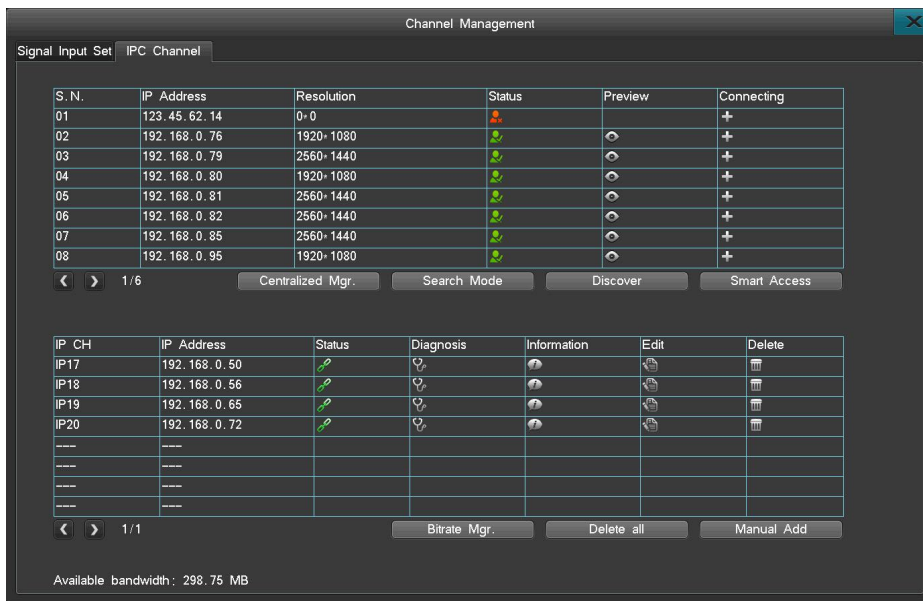
This series support analog channel 3MP/4MP real time view. When enable 3MP/4MP real time view and useful channel will be 1.3.5.7...and 16 channels device becomes 8 channels.Playback frame rate decides by resolution;for example,DVR connects 1080P and the recording frame rate is whole real time,if DVR connect 3MP camera and the recording frame rate is 16 fps,4MP camera is 12 fps.

Note:

Change to real time mode,DVR will restart automatically.

After changing to real time mode,channel type also can be adjusted only for 1.3.5 channels...

After changing to real time mode, channel 2.4.6.8... Can be connected with IPC and it will be blank if no IPC connected.

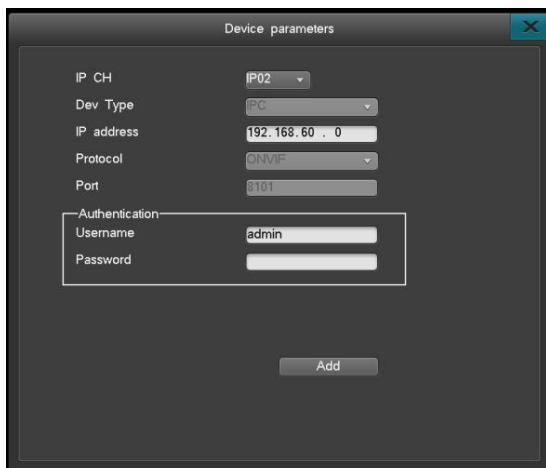


After entering the IPC Management interface, the system will automatically search all IP Camera's that are within the same network and displays them in a list. Available cameras are shown on the upper half of the interface and the cameras already paired are shown in the bottom half.

6.5.2. Add IP cameras

There are three ways to add an IP Camera: manually adding on the IPC Management interface (as shown below), via the Smart Access feature or left-clicking the add icon (“+”) once to add camera directly.

1. To manually add an IP camera: Click “Manual Add” to enter the settings interface as shown below:



Instructions:

Enter/set up the parameters in the following sections:

- IP Channel: Select the system channel of the IPC.
- IP Address: Enter the IP address of the IPC.
- Username: Enter the username for the IPC.
- Password: Enter the password for the IPC.

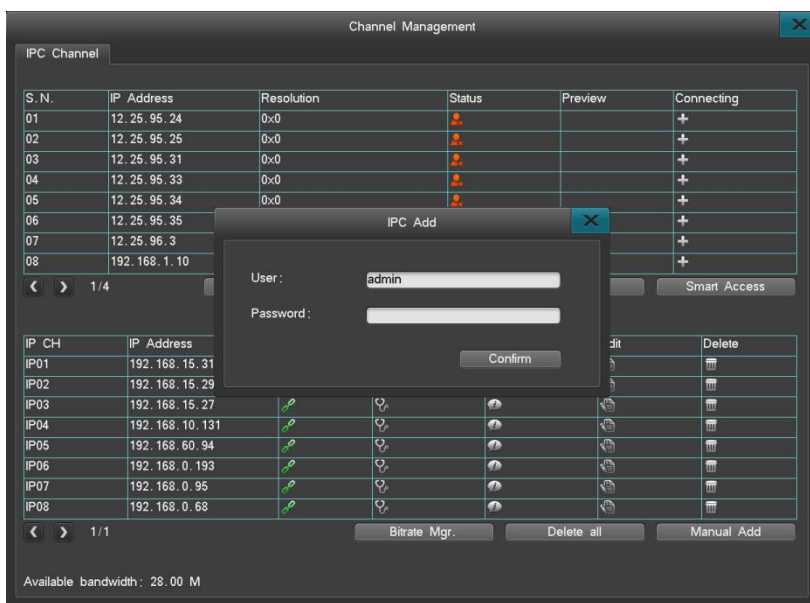
After setting up the above parameters, click “Add” to add the IPC to the system.

2. Smart Access: Tap on “Smart Access” and the system will automatically add all IP Cameras to the system in the same order shown in the upper section. Before using the “Smart Access” feature to add the IPC’s, users can sort the order of the IP Cameras using the following instructions:

- To sort by IP address: Move the cursor to the available IP addresses on the IPC list and left-click the mouse once to sort the IP cameras base on IP address.
- To sort by resolution: When the system detects IP Cameras of different resolutions, move the cursor to the "Resolution", left-click once to sort base on resolution.

(Please Note: Smart Access can only add the IP Cameras that are online at the moment, those that are offline will not be added)

3. To add an IPC from the channel window: click the corresponding "+" icon for each available camera
 When the status of the IPC is displayed with the "✖" icon, the adding IPC interface will open; (as shown below) reminding you to enter the username and password for the camera you wish to add. An available camera with the icon "✔" the username and password is not required.



(Please Note: After adding the cameras successfully, it will only appear on the connected IP Cameras list and won't appear on the list of available IP Cameras).




6.5.3. Deleting IP cameras

The delete option applies to connected cameras only. You can delete one-by-one or delete all cameras at once.

1. To delete IP Cameras one-by-one: on the list of connected IP Cameras, click on "🗑" and select "Yes" when prompted
2. To delete all cameras at once: To delete all connected cameras, click "Delete All" and select "Yes" when prompted.

Please Note: After the camera is deleted, it will be moved back to the available camera list on the upper half of the interface.

6.5.4. Other Instructions

1. Discover: Left-click the “Discover” button once to refresh the available IP camera list.
2. Flip pages: When there are multiple IP Cameras in different pages, left click the “◀” or “▶” icon to flip pages.
3. Status: The connection status of an IP camera is color-coded. Red: Abnormal, the IPC is disconnected and there is no video signal. Green: Normal, the IPC is successfully connected and currently online, Orange: A certain channel is abnormal, but the video images can still be displayed in general.
4. IP channel diagnosis: Left-click the “ ” icon and enter the IPC diagnosis interface which will allow you to diagnose video streams
5. IP channel information: Left-click the “ ” icon to enter the IP channel information interface. Channel numbers, channel names, IP addresses, current resolution of the mainstream, the status, protocol, port, manufacturer, model and hardware version of the IPC.
6. IP channel editing: Left-click on the “ ” icon to enter the IP channel settings interface to change the IP address and the username/password.
7. Search mode: It can support different search mode like Smart, General, H-mode, Z-mode, Y-mode. Switch the mode will make device restart and all added IPC will be deleted, so please make sure if you want to switch it.

6.5.5. IPC Centralized management

IPC management support to configure batch of IPC’IP, both searched IPC and added IPC can support this function.

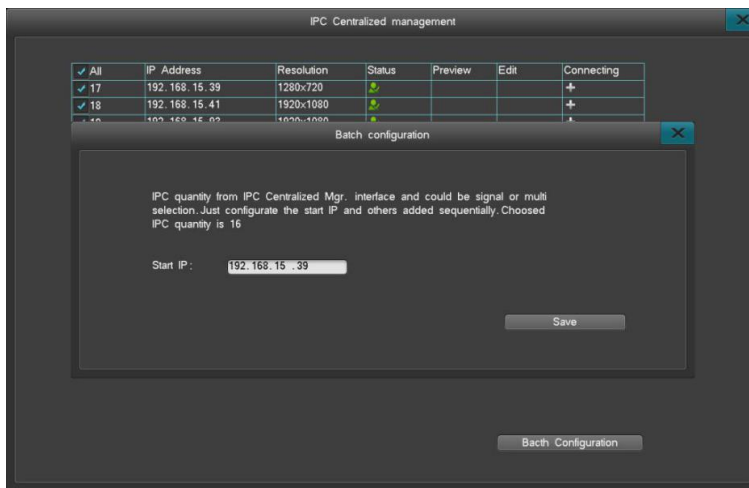
Click “IPC management” to enter the interface like picture:

IPC management interface contains IP address, resolution, status etc., support add IPC and edit added IPC.

Batch configuration which can adjust the IP address and steps like below:

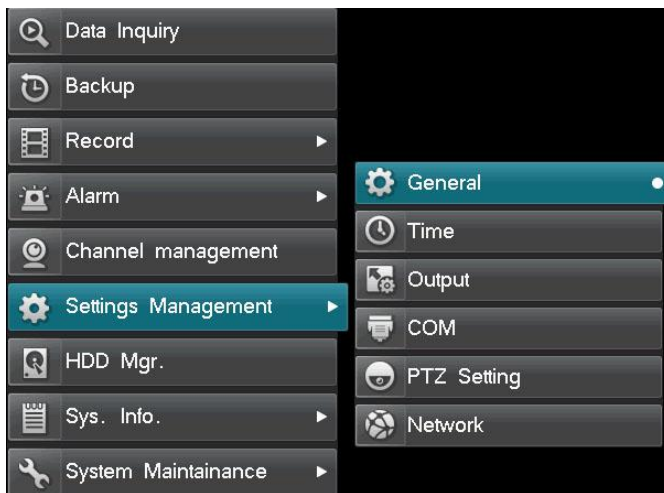
- Choose some IPC and click batch configuration button.
- Set started IP and save it in the batch configuration interface.
- Adjust the IP address successfully.

Please Note: IPC management interface decides the member of IPC automatically. When set the started IP and other chosen IP will configure one by one.



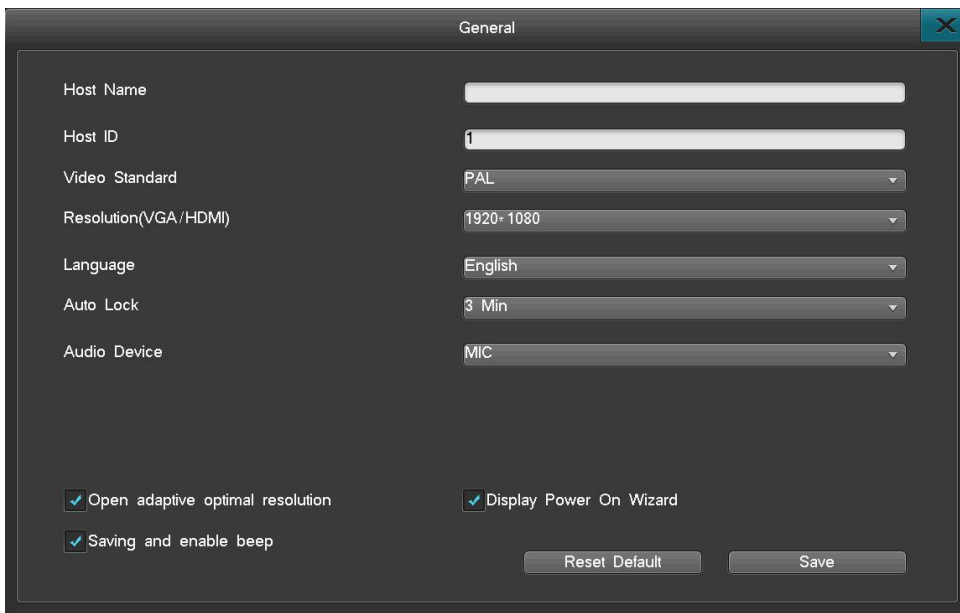
6.6. Settings Management

Settings Management includes: General settings, Time settings, Output settings and Network settings, as shown below:



6.6.1. General Settings

After logging in, click "Setting Management"> "General Settings" to access the general settings interface, as shown below:



6.6.1.1.Host name

Set up a name for the device.

Host ID

Controller host number or serial keyboard address code.

Video Standard

Set video standard to PAL or NTSC

6.6.1.2.Resolution

Available Resolution are: 1280*1024, 1440*900, 1280*720, 1920*1080, 2560*1600@60,3840*2160

6.6.1.3.Auto lock

The system is able to lock down the system interface after a preset period of inactivity. The default for auto lock is three minutes, with a custom range of one to ten minutes available.

6.6.1.4.Display 'Start-Up Wizard'

After selecting and saving the setting to display the 'Start-Up Wizard', every time you turn on the device, the system will automatically inquire whether or not you want to enter the start-up wizard. The available options are: activate the IVView, set system time, internet/network settings, disk management and encoding parameter settings. You can simply select cancel to skip this option, and exit the wizard.

6.6.1.5.Language

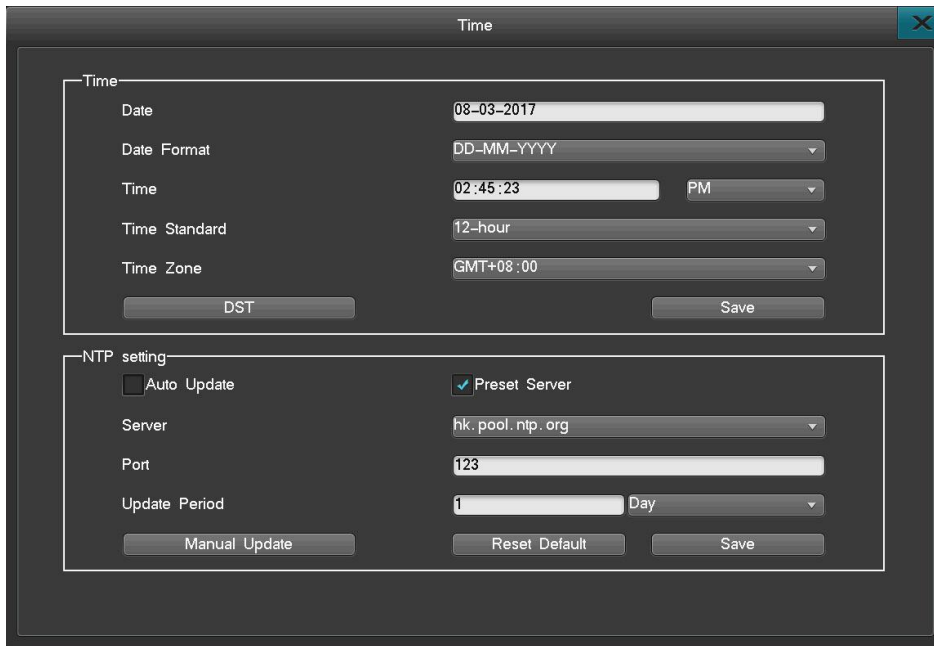
Supports both English and Chinese by default.

6.6.1.6. Save and enable beep

Turn on/off the beep sound.

6.6.2. Time settings

After logging in, enter the time setting interface through “Settings Management” → “Time Settings”, as shown below:



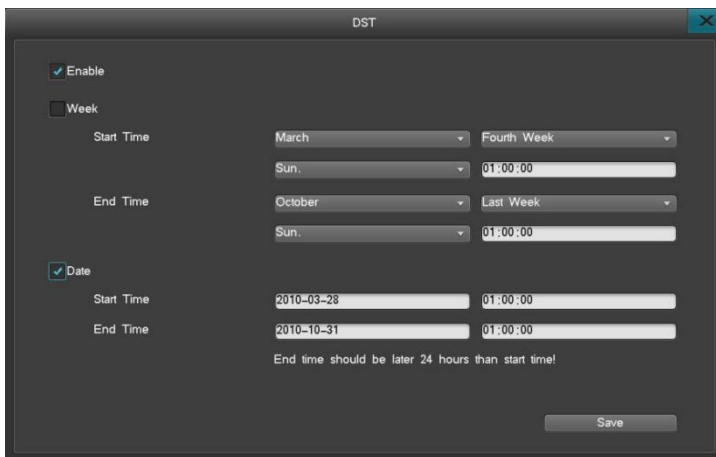
6.6.2.1. Time Settings

The menu is for setting up or editing current system time and supports direct editing and editing via calendar (to edit via calendar, please double-click on the calendar to enter editing mode).

1. The interface supports 9 different time formats.
2. Supports both the 12-hour and the 24-hour clock format.

6.6.2.2. Daylight Saving Time (DST)

Click on the daylight saving time button and enter the settings interface (as shown below) and then set up the beginning and ending point of daylight saving time (choose to either enter the precise dates or the starting and ending weeks).



6.6.2.3. NTP Settings

The Network Time Protocol, which obtains current time via the internet time server and set the system time for the DVR. (system default: time.nist.gov port:123, default time zone:GMT+08:00)

1. Server: The current default time server can be adjusted. If the default time server cannot be connected, you can then choose another time server, or uncheck the “Default Server” option on the interface and enter the time server you wish to use.

2. Port: To connect the time server via the internet. The system is SNTP-based and only supports TCP.

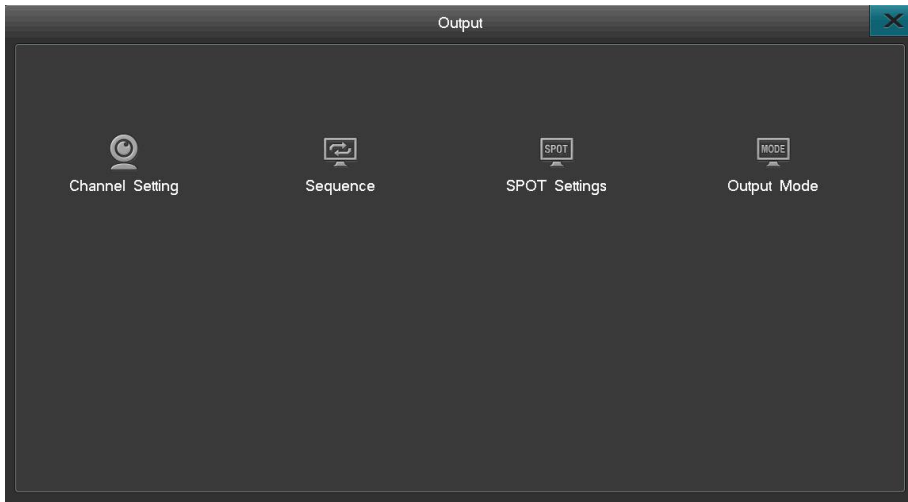
3. Time zone: The system supports settings of all 26 time zones:
 GMT+0 (London) ,GMT+1 (Berlin), GMT+2 (Cairo), GMT+3(Moscow), GMT+5 (New Delhi), GMT+7 (Bangkok), GMT+8(Hong Kong/Beijing), GMT+9 (Tokyo) , GMT+10 (Sydney), GMT-10 (Hawaii), GMT-9(Alaska), GMT-8 (Pacific Time), GMT-7 (Mountain Standard Time), GMT-6 (Greenwich Mean Time), GMT-5 (Eastern Standard Time),GMT-4(Atlantic Time), GMT-3(Brazil),GMT-2 (Mid-Atlantic)

4. Auto update cycles Intervals are hour, day, or week. All options are within the range of 1-60 times per cycle. “Auto Update” will update the time on the device automatically.

5. DVR needs internet access to perform NTP.

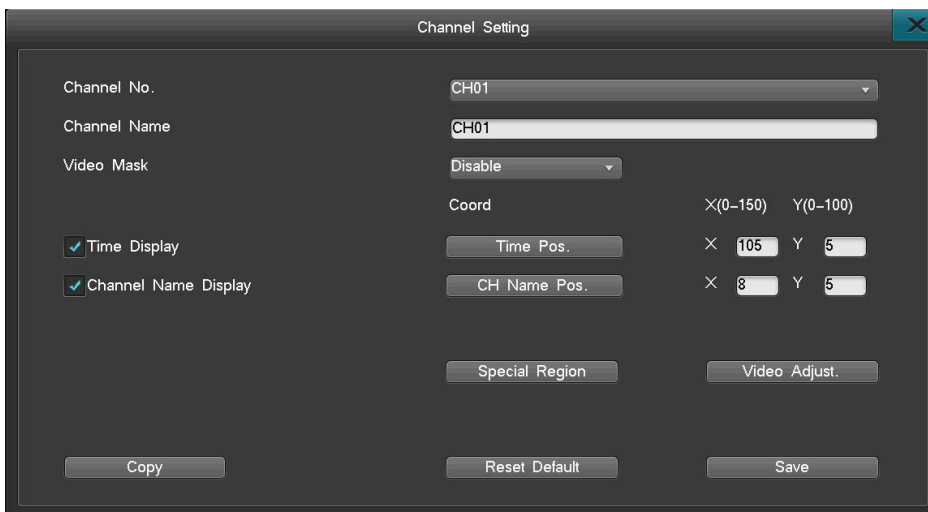
6.6.3. Output

Select “Main Menu ” → “Settings Management”→ “Output” as shown below:



6.6.3.1.Channel Settings:

On the "Output Settings" interface, select the "Channel Settings" option and enter its interface, as shown here:



The channel settings interface allows you to edit channel parameters: channel name, video mask, video parameters, and channel name location.

(1) Channel Name

Name the channel. Channel name can be up to 30 characters. If you want to display the channel name in video live view and playback, please check this option, but for IP Cameras, the IP Camera should support this function.

(2) Video Mask

There are 4 options for video mask: Disable, Preview Mask, Record Mask, All Mask. A maximum of 4 mask areas can be set.

Disable: Disable video mask function.

Preview Mask: Mask an area which won't be seen on live view.

Record Mask: Mask an area which won't be seen during playback.

All Mask: The area will be masked in live view and during playback.

Note: Each channel can set four areas but all four areas can not exceed 10% of total screen.

How to set a video mask:

1. Click "mask area" in Record Mask or All Mask modes, Left-click and drag the mouse to select a mask area; up to 4 areas are available. Double left-click to clear the mask area.
2. Right Click to exit to front page, and save it.

Please Note: IP Channel Video mask need to be supported by IPC

(3) Video Channel Adjustment

Click "Video Adjust" to modify the video parameters.

Adjusting methods (IP Channel):

1. Select a Channel Number.
2. Left-click the "▶" or "◀" to change the value or drag the bar left or right



Adjusting methods (Analog Cameras Channel):

1. Channel number: (Choose the target channel).
2. Time Period: you can set two schedules to change the parameters, when it goes to the time, it will change the parameters automatically.

Note: these two time schedule can't be conflict.

3. Scene: change the situation to "Customize" first, then click "▶", "◀" to change the parameters.
4. NR: it means noise cancelling, you have 5 options, the number goes high, the effect goes better.

5.SC Mode: Video signal compensation,when BNC cable is too long and image is pale,black and white that should use signal compensation.Device support several modes(Various modes used for different lengths of BNC cable):

Standard: EQ self-compensation

Mode 1:0-50 m

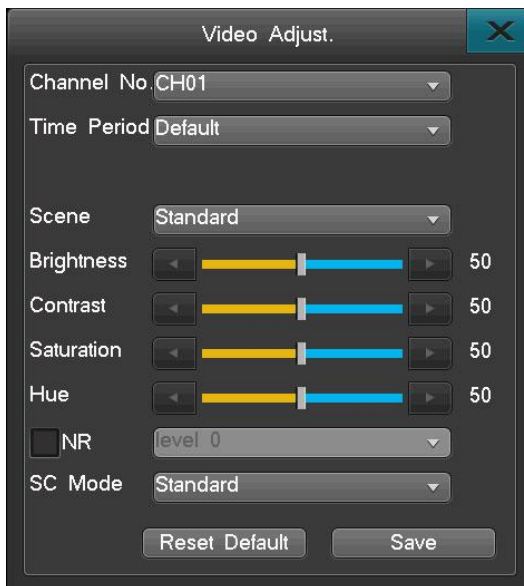
Mode 2:50-150 m

Mode 3:150-250 m

Mode 4:250-350 m

Mode 5:350-450 m

Mode 6:450-550 m



(4) CH Name Pos

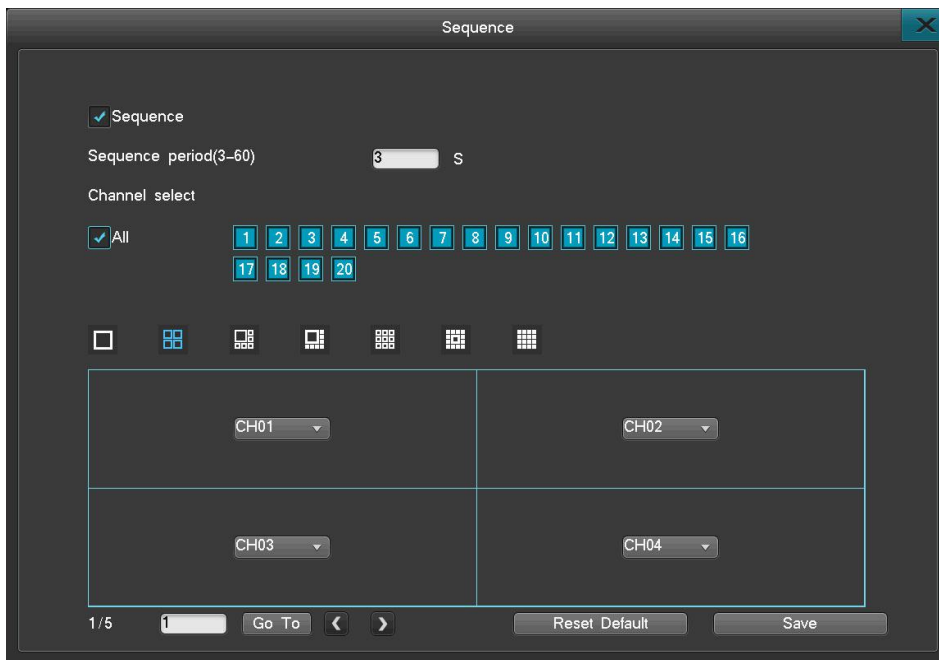
Click "CH Name Pos" to switch channel name position, the channel name position is set to top left as default, Analog Camera can be adjusted directly, for IP Camera, it need to be supported by camera.

(5) Time Pos

In the channel setting interface, click "Video Adjust" to access video parameter setting interface; it also can access via right key and adjust Brightness, Contrast, Saturation. For Analog Cameras, the time is showed on the upper right corner of the picture, users can change the posion by themselves, for time position adjustment in IP Cameras, it need to be supported by camera.

6.6.3.2.Sequence

Select "Settings Management" > "Output"> "Sequence" to enter Sequence interface.



Steps for setup:

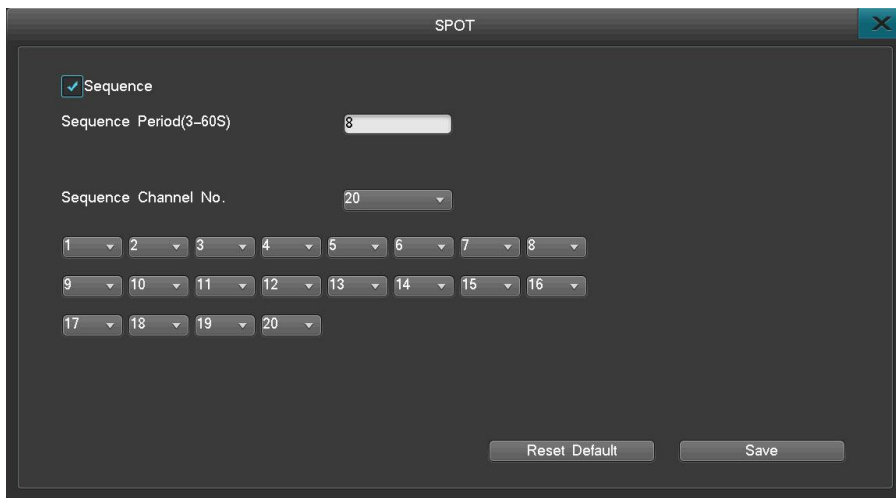
1. Check "Sequence" to enable the feature.
2. Set up the sequence period by entering the desired time within the available range: 3-60 seconds
3. Set up the sequence channels and choose means enable.
4. Set up the sequence format, the default is 1 image, but you can choose between 1/4/8/9/13/16 image/s by clicking on the respective icons.
5. Set up the channel sequencing. The default starting channel is Channel 1. User can select a different starting channel and adjust the order of channels by clicking the "▼" button to select another channel number from the drop down menu. If there are multiple screens, you can click the "◀" or "▶" button and then enter the number of screens to sequence and set up the channel sequence.
6. Click "Save" to save the settings.

(Please Note: the sequence feature is active only when the system is in locked down state)

6.6.3.3.SPOT Setting

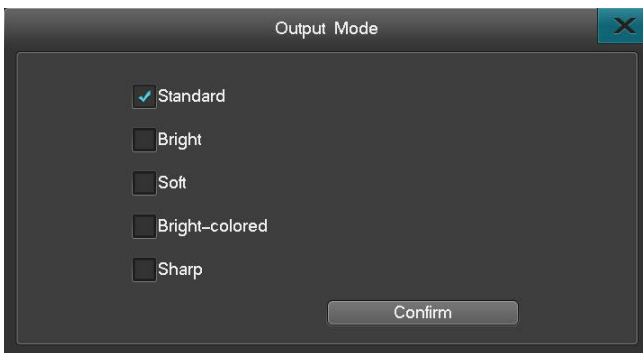
This product support SPOT output, but only can do live view, can't do operations.

1. Enable Spot.
2. Set period and range is 3~60
3. Choose the target channel in SPOT
4. Save



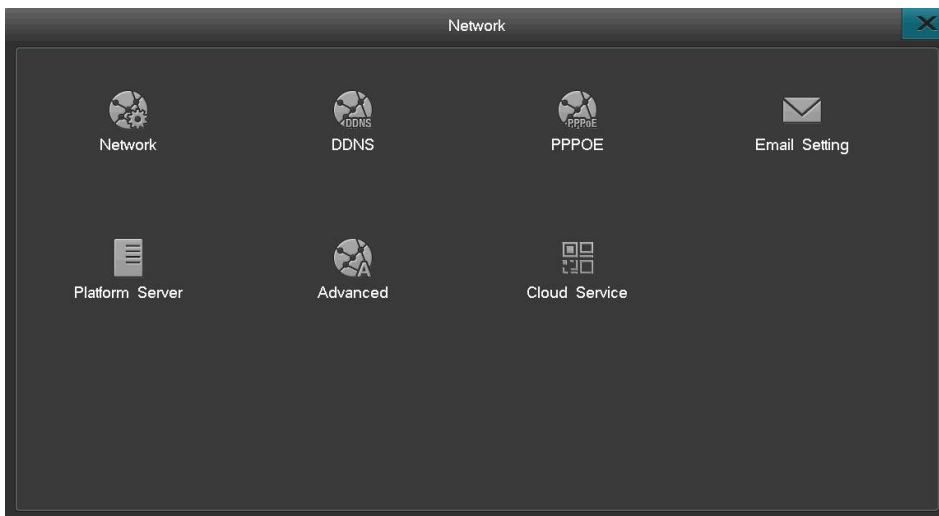
6.6.3.4. Output Mode

Output: Change the image color and brightness on your monitor.



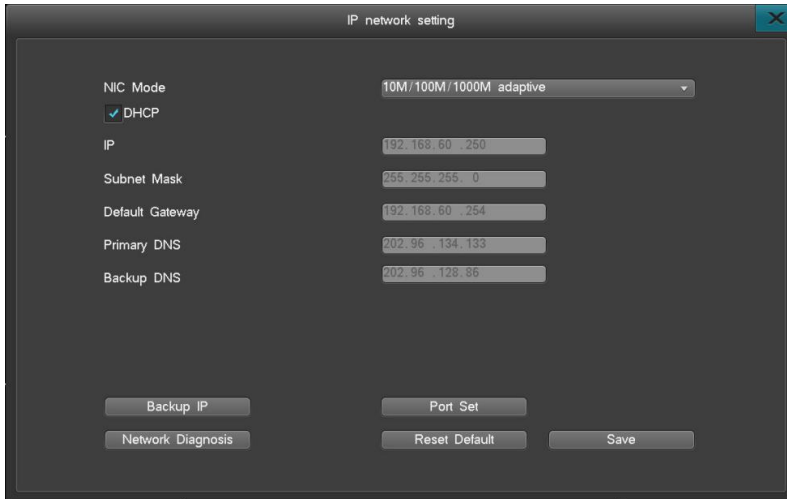
6.6.4. Network

After login, click "Settings Management" > "Network Setting" to enter the interface shown below:



6.6.4.1. Network Settings

From the Main Menu > “Settings Management” > “Network setting” > “Network” to enter the interface shown below:



- There are four different ports: Command port, HTTP port, update port, RTMP port.
- HTTP ports: Internet Explorer port (system default: 80), the format for Internet Explorer is “http://IP”. When switched to another port, the format for Internet Explorer access should be “http://IP:port number”
- Command port: Default 8101; range from 8000-9000
- Internet Diagnosis: Check the current DVR network. User can repair the network.

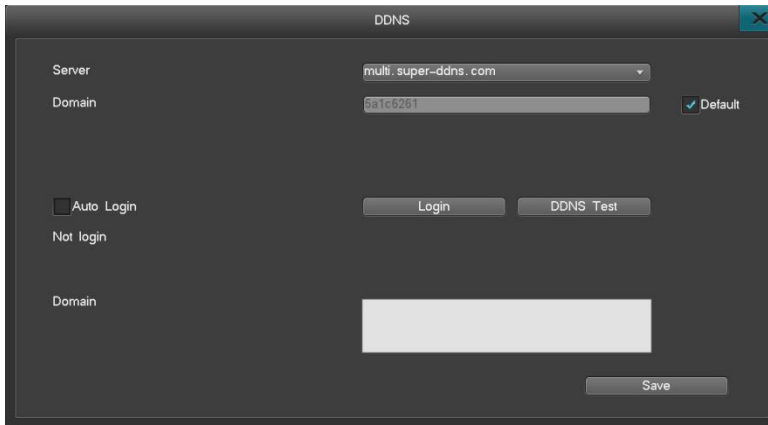
6.6.4.2. DDNS Service

After entering the Network Settings Interface, select “DDNS” to enter the DDNS settings interface, as shown below:

- Domain: Select super-ddns server, select “Default”(Default Domain is the device’s last 8 bits of the MAC address. For example, If the MAC address in “system info” is e4:7d:5a:00:29:47, then the domain is 5a002947). Click “login” to auto-register a domain. You can also type in any domain that has not been used before, then click “login” to auto-register the domain.

For ORAY/Meibu/FreeDNS/no-ip/ Dyn dns domain names: sign up for a domain name on their official web site, and enter the correct required information in the DVR click “save”. The registered domain name can be used to access the device from pc/laptop or phone app. Set up the username and password you registered for on any of those sites, save the setting and then the system will be able to update the domain name.

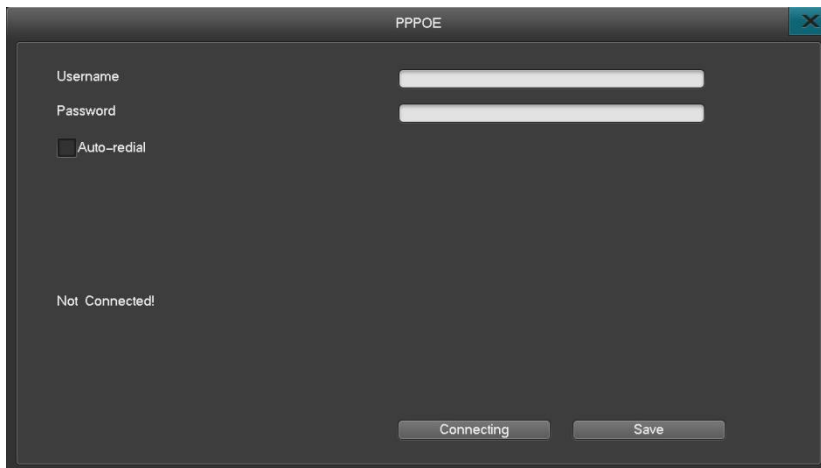
- DDNS test: Checks if the registered domain account is available.



6.6.4.3. Dial-up Internet Settings

After entering the "Internet Settings" interface, select "PPPOE" for Dial up Settings interface, as shown below:

Please Note: your PPPOE username and password can only be obtained from your Internet Service Provider.



- Username: ADSL account username.
- Password: ADSL account password.
- Auto Reconnect: When this feature is selected, ADSL will automatically redial after disconnect.
- Click "Save" to save the credentials.

6.6.4.4. Email Settings

After entering the "Network Settings" interface, select "Email Settings" to enter the 'Email Settings' interface, as shown below:

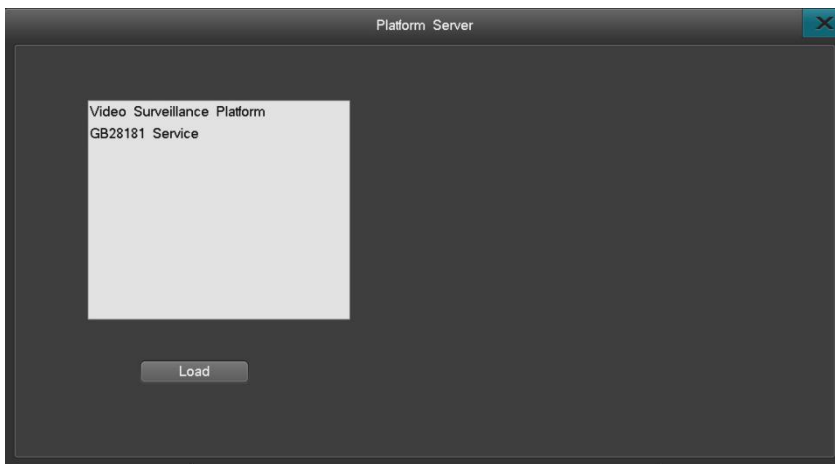
The available email alarms include: Motion detection, video loss, hard disk errors and disk full. For selected alarms, notification can be sent to your email inbox when an alarm is triggered.

Setting up Email notifications

- Input your Email server.
- Input user name, which should be email address chosen as the sender email address and password for that email account.
- Input Sender Email and Receiver Email addresses.
- Receiver email can be multiple email addresses, separate the addresses with “;”. Limited to 256 characters total.
- Port is 25 by default. Please check with your e-mail provider for the correct port number.
- Set the e-mail upload period. If multiple alarms are triggered within the same period, only the first alarm will send out an email notification.
- Click “Save” when done.
- Turn on SSL if required by your email provider.

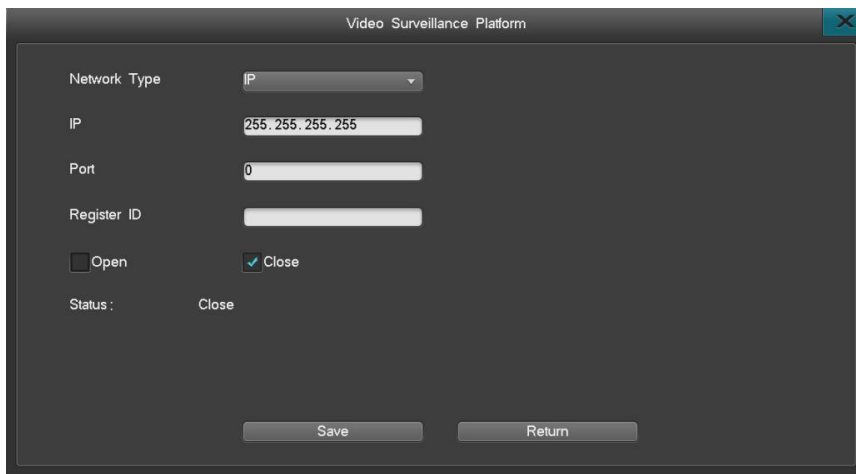
6.6.4.5. Platform Server

This series support platform server and GB28181 server. Device can connect to CMS automatically via add register ID. GB28181 is the standard protocol which defined information transmission, exchange, control, communication protocol structure, transmission, exchange, control of city surveillance alarm and requirement of control and transmit, protocol interface. It used to design security project of surveillance alarm network system, system detection and accept and some other device develop and manufacture for reference. Click “Platform Server” in Network interface which can enter GB28181 like picture as above.



Platform Server configure steps:

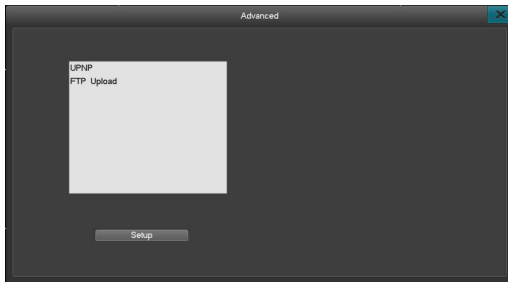
1. Add device on platform server: input device name, choose “connect automatically” in device type, video channel number, alarm input number, alarm output number and so on, and then confirm to add.
2. Click the adjust icon of adding device to get the register ID.
3. Input device register ID, platform server IP and platform server port (default is 8000) on upper left of DVR interface.
4. When connect successfully, platform can operate the device.



6.6.4.6. Advanced Settings

The UPNP (Universal Plug and Play) feature is able to automatically open ports; enabling WAN access to the DVR on user’s LAN network.

In the “Advanced Settings” interface, select “UPNP” and click “setting” to enter the interface.



The steps to use UPNP to access a DVR camera are as follows:

1. Set up the DVR network IP address to the same network segments as the router. DHCP is recommended when using UPNP.
2. On the UPNP interface, check the “Turn on UPNP” option to activate the UPNP feature. If the users wants to add additional ports, please click on the “add new” option.
3. Click “Add new” button to enter the “UPNP PAT add” interface. User can set up the service name and choose the appropriate protocol (TCP/UDP), DVR port number and router port number (for your own convenience, you can set the router port to be the same as the DVR port). After setting up the parameters and saving the settings, you can now return to the main UPNP window.
4. From there you will see a newly added port mapping, and see the addition on the UPNP settings interface (Please Note: for some routers, there may not be that list where the UPNP option is displayed). To verify whether or not UPNP is in effect, please use website such as canyouseeme.org to verify port status.



Please Note:

1. UPNP needs to be supported by the router. If UPNP is not supported by the router, please setup port forwarding on the router or set up DMZ.
2. The HTTP port, Command port, and RTMP port need to be forwarded in the router for Online live view.

6.6.4.7. Cloud Services

Click “Network setting” > “Cloud service”



- Turn on/off “IVView”: Check “Turn on IVView”; click “Save” to activate the feature. When activated successfully, you can see the status change from “Offline” to “On-Line”
- Download the mobile client: Scan the QR code to download the mobile App.
- Add your device : Scan the QR Code on the right to add the device to the App.

Please Note:

-Before adding your device, register an account through the mobile App.

-You can download a quick guide from our website to help you with app connection.

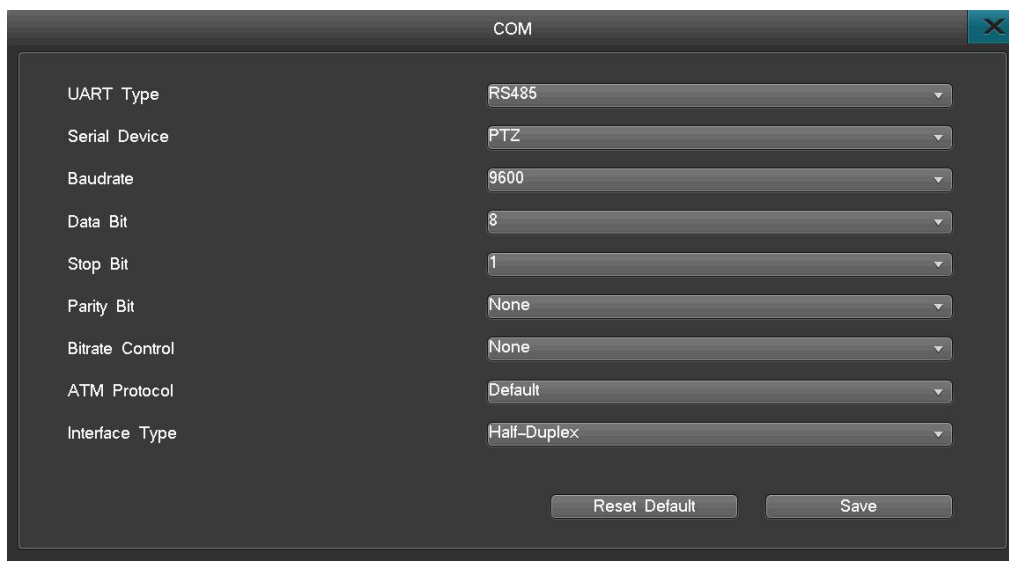
-The Cloud interface can be accessed from the ‘Start up Wizard’, the status bar and from the Internet settings.

6.6.5. COM

“Settings management”→“Serial settings” to enter serial setting interface when login like picture:

This setting can communicate between DVR and external device connected via serial port.RS485 in DVR is half-duplex port which can receive and send and it can connect to PTZ and control keyboard at the same time.

RS485 contains serial number, serial device, baud rate, data bits, stop bit, check bit and so on.



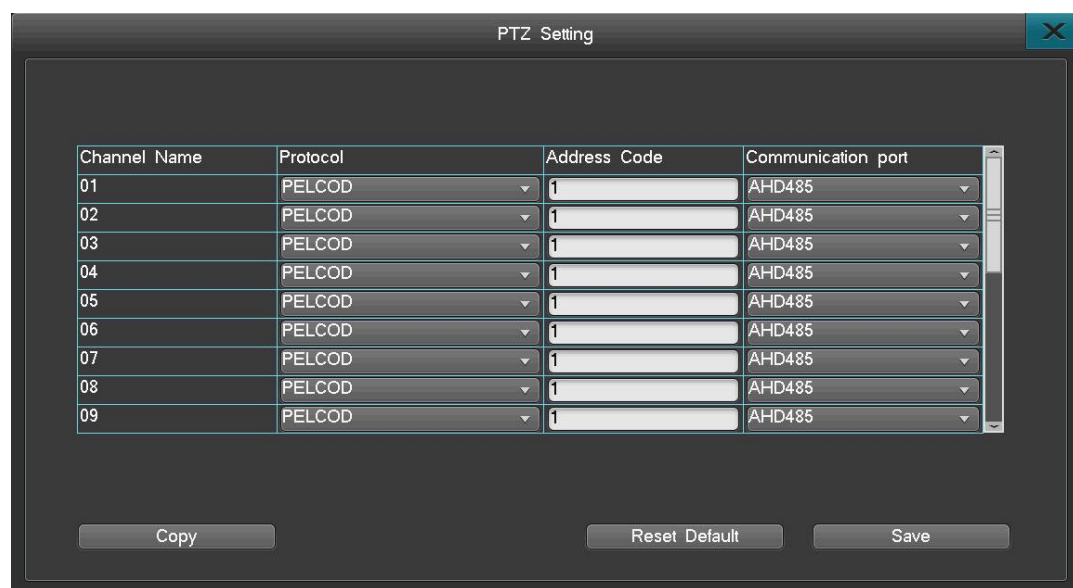
6.6.6. PTZ Setting

1. Set UART Type, Serial Device, Baud rate in COM.

2. Enter PTZ Setting to set Protocol, Address Code, Communication Port(AHD485 or RS485); (PTZ address code and channel number is corresponding which means the first channel address code is 1)

Note: Dome protocol, baud rate, address code need to be corresponding with dome protocol and it can control PTZ

3. PTZ function display on single channel and right click to enter PTZ interface and quit by right key.



6.6.7. PTZ Control

1. Finish COM setting and PTZ setting.
2. Choose the channel with PTZ in Live View interface and right click to choose "PTZ Control".
3. It can operate those function of Up, Down, Left, Right, Zoom, Focus, Aperture, Cruise, Preset, Call in PTZ interface.



6.7. HDD Management

"Main Menu" > "HDD Management" to enter the HDD Management interface.

User can check the hard drive's basic information, HDD Group, Storage setting and SMART information.

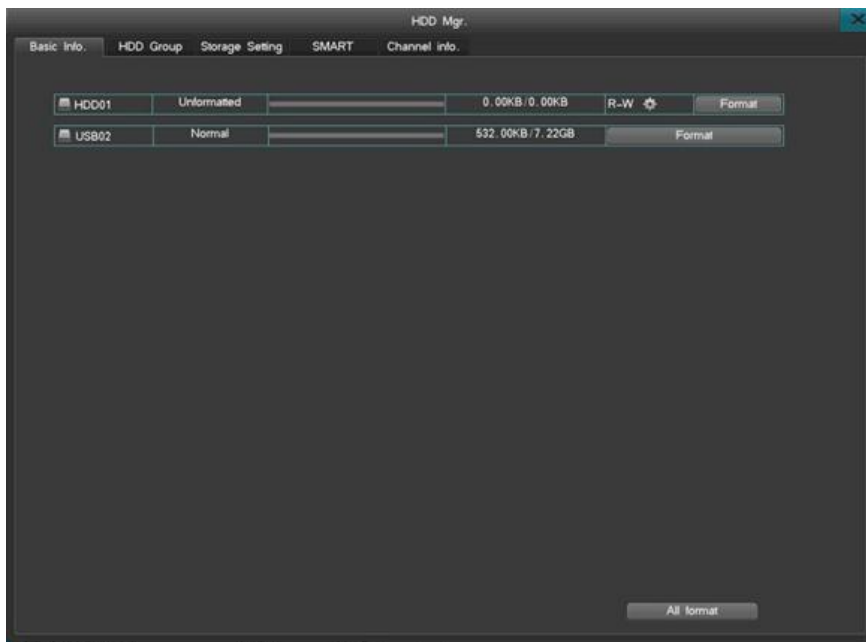
6.7.1. Basic Information

(1) Basic information: Displays the information for each Storage Device, HDD or USB, system only supports FAT32 format.

(2) Disk attributes: There are two attributes — R-W(Read and Write) and R-O(Read-only). User can change the attribute from R-W to R-O in order to prevent data loss. How to Set: Click the icon "⚙️" and select "Yes" on the pop up window to change its attribute.

(3) HDD format: Select the HDD you want to Format or choose "All format" to clear and format all HDD storage.

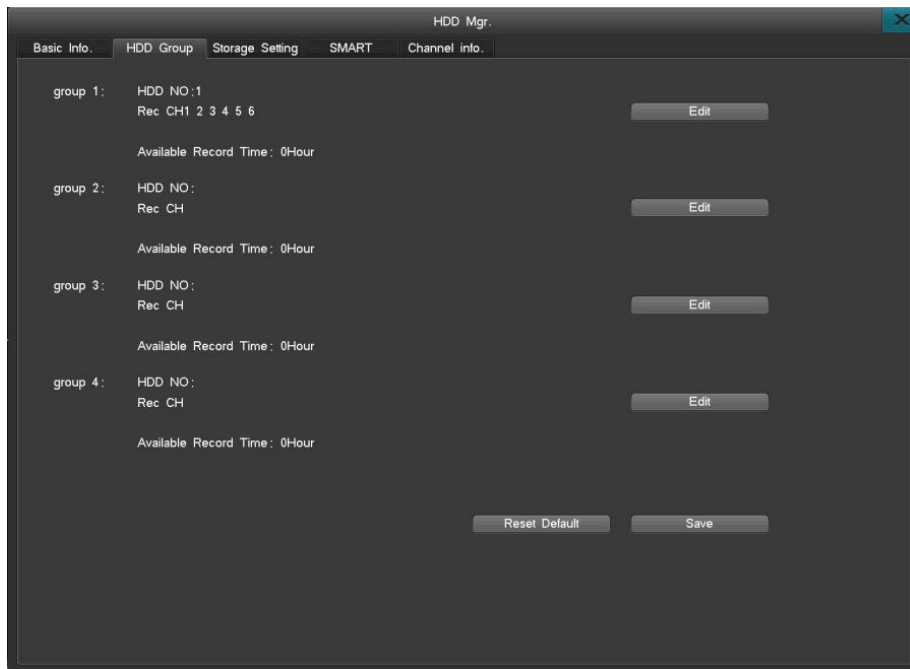
Please Note: Format the HDD when installing the HDD to the DVR the first time. System will not record video if HDD is not formatted.



6.7.2. HDD Group

Setting an HDD Group allows the selected channel to be stored in a certain HDD.

Click "HDD Group" to enter the following interface.



The interface shows the info of each group; click "Edit" to change settings.

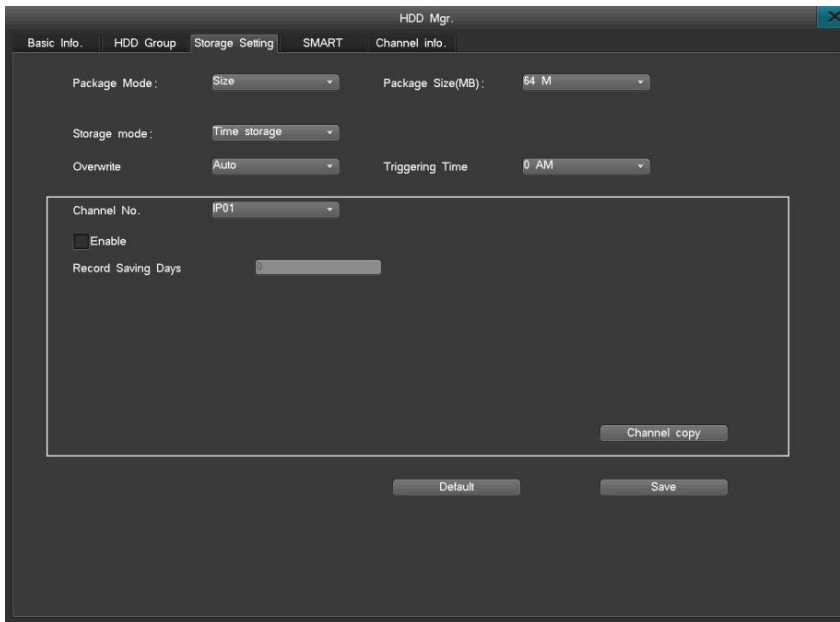
HDD NO: Assign HDD number to the group.

Rec: Assign the channels to be stored in this HDD group.

Available Record Time: Max recording time in the remaining storage for the HDD group.

6.7.3. Storage Settings

Select “Storage Device” on the Disk Management settings interface, as shown here:



- Overwrite images: “Auto” is recommended. “Auto” will automatically overwrite the earliest records when the HDD is full, if the setting is on “Manual”, user needs to confirm to overwrite when prompted by the disk full alert. The device will stop recording until you confirm to overwrite the disk.
- Packing Method: Including 2 packing methods – by size, time and non-packing. When you select packing by size, you can set package size (64M, 128M, 256M, 512M, 1024M optional). When you select packing by time, packing time range is from 1min to 99min. The system will store and backup record data as your configuration if you enable one packing method. For example, if you set 128M packing size, the system will store each 128M record data as subsection.
- Storage Mode: Including 2 storage modes – Time storage mode and Space size storage mode. You can set record storage size and start time of each channel. In time storage mode, you can set number of record storage days to each channel, and when the HDD is full, the data of channel won’t be covered in setting number of storage days. In space size storage mode, you can assign specified record space to different channels. When record space (of one channel) is full, the system will stop recording for this channel. If you enable space size storage mode, HDD group function won’t be available.
- Triggering time: Set a schedule to check the HDD storage.
- Channel No: Choose the channel whose data will be automatically deleted when the HDD is full.
- Select “Enable” to activate recorded data auto-delete function.
- Record Space: Available setting record space to certain channel
- Available record time: calculated record time according to record space
- Available configurable capacity: Total record space provided by system HDD
- Surplus capacity: Surplus record space capacity (after deducting the assigned record space to channels)
- Channel Copy: Copy the channel configuration to other channels, to realize mass setting.
- Recording saving days: set how many days the data will be stored. (For example: if set for 7 days, the system will delete the 1st day’s data on the 8th day)

Please Note: When the file or disk has been set as “locked down” or “read-only,” data cannot be overwritten or deleted.

6.7.4. SMART

“Main Menu” > “HDD Management” as shown below:

Click SMART to show the HDD model, serial number, hardware version, temperature, health condition and other SMART attributes and status.



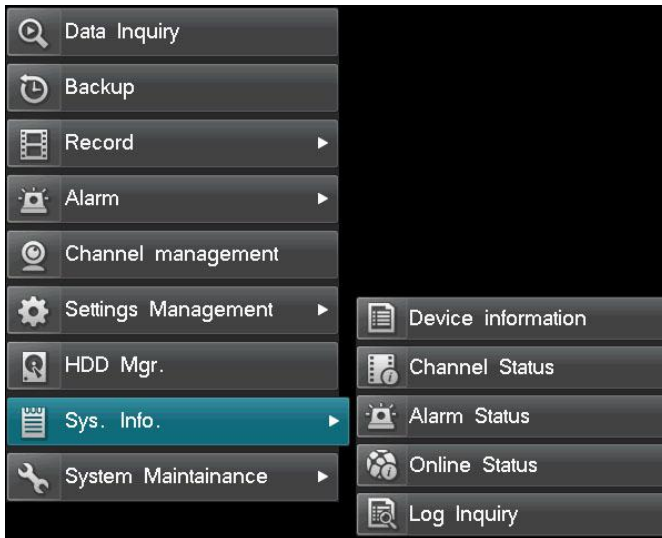
6.7.5. Channel info.



Channel information displays start recording time and recording days of all channels.

6.8. System Information

System information interface is as shown below:



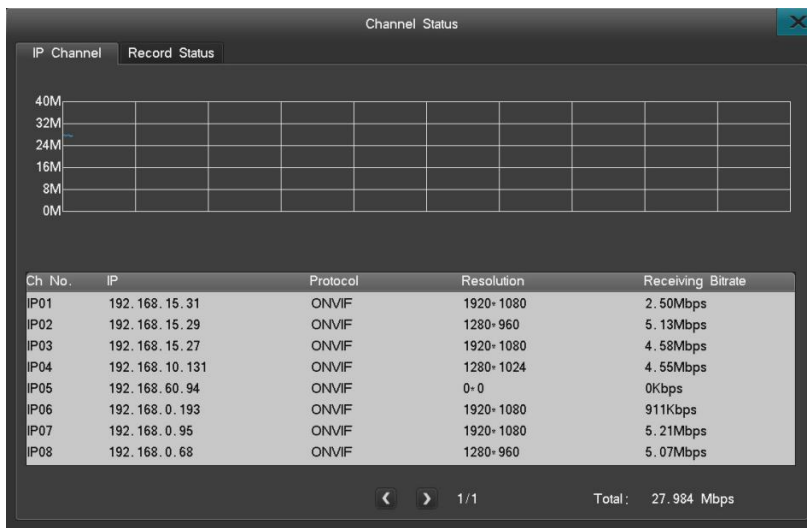
6.8.1. Device Information

Displays DVR information such as: device model, software version, hardware version, IP address, MAC address, language, etc., as shown below:



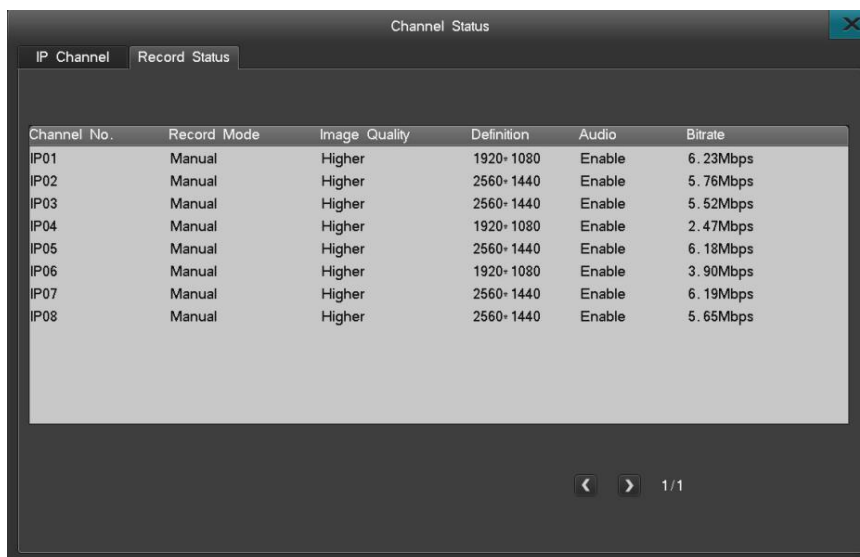
6.8.2. Channel Status

Quickly check the current status and recording status of all channels. Displays the camera's IP address, Protocol, resolution and Bitrate. Click on the "◀" or "▶" icon to flip through the pages, as shown below:



Quickly inquire system channel status and record status. IP channel interface table displays real time total received code rate, information table displays current IPC's IP address, protocol, record definition, total received code rate. Click icon “◀、▶” to check channel status of the other page. See the interface picture on the left below.

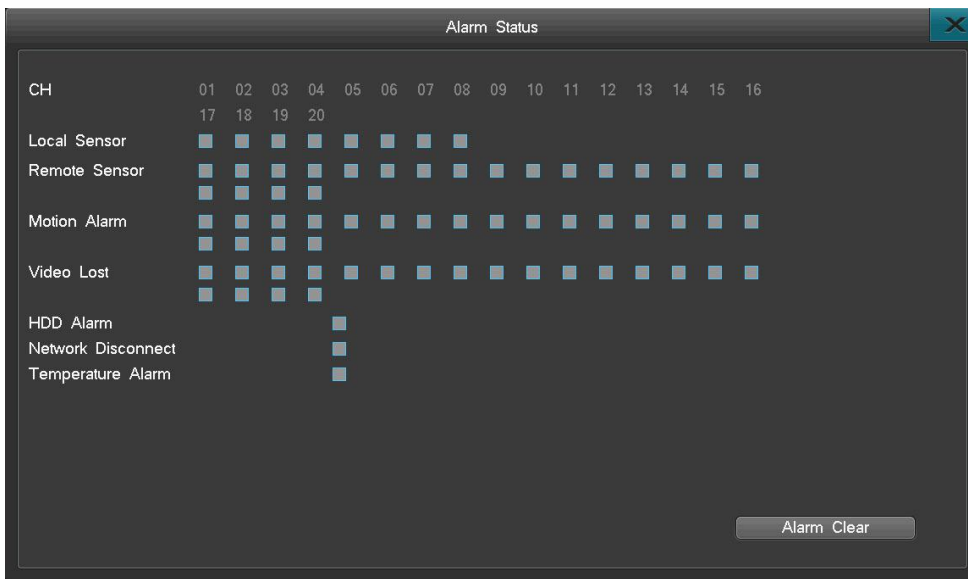
In record status interface, it displays record status information of the channels currently connecting IPCs, including channel number, record type, image quality, definition, audio status, code rate. Click icon “◀、▶” to check record status of the other page. See the interface picture on the right above.



6.8.3. Alarm Status

The alarm interface is as shown below:

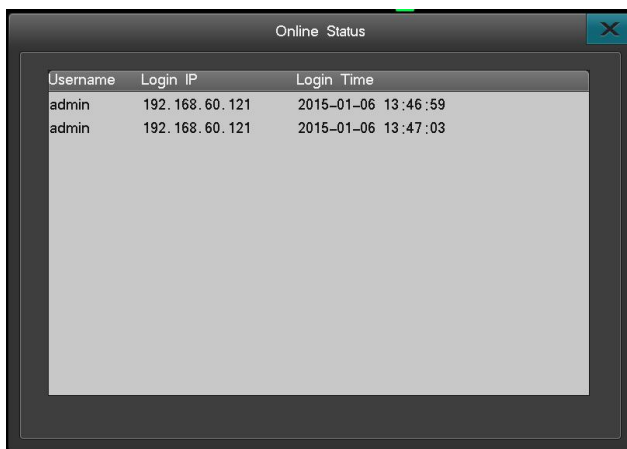
Displaying the alarm information for each channel, including motion detection alarms (in yellow), video lost alarms (in blue).



Click on the Status indicator in the navigation bar to go to the Alarm status interface. Click “Alarm Clear” to clear all alarms.

6.8.4. Online Status

Displays: All current logged in user accounts, users IP address, login time.



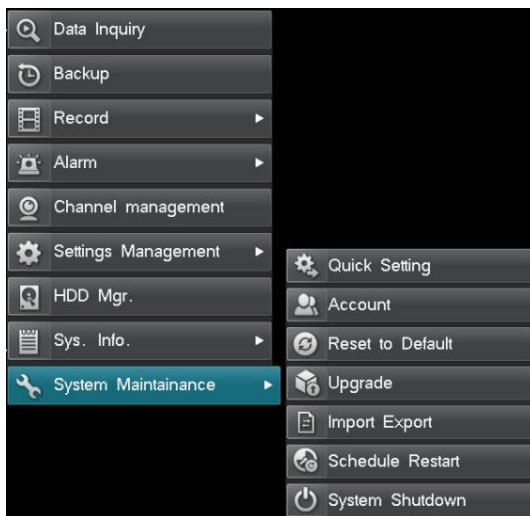
6.8.5. Log Inquiry

System login inquiry, as shown below:



6.9. System Maintenance

From 'Main Menu' > "System Maintenance"; menu is as shown below:



6.9.1. Quick Settings

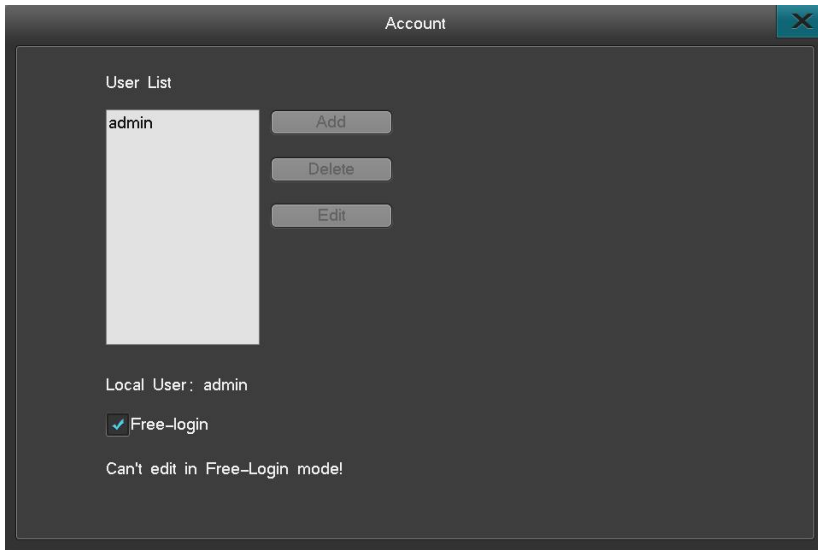
Quick settings will bring up the Start-up wizard, allowing quick set-up of the "Cloud service", "Time Setting", "Network Setting", "HDD Mgr", "IPC management", "Code parameter".

Note: Please click "save" to apply changes.

6.9.2. Account

The default username is "admin" the default password is 888888. The admin account has full authority on the device and is able to establish up to 15 additional user accounts. The admin account must determine the

access permitted for each additional user account. For system security, it is recommended to change the default password.

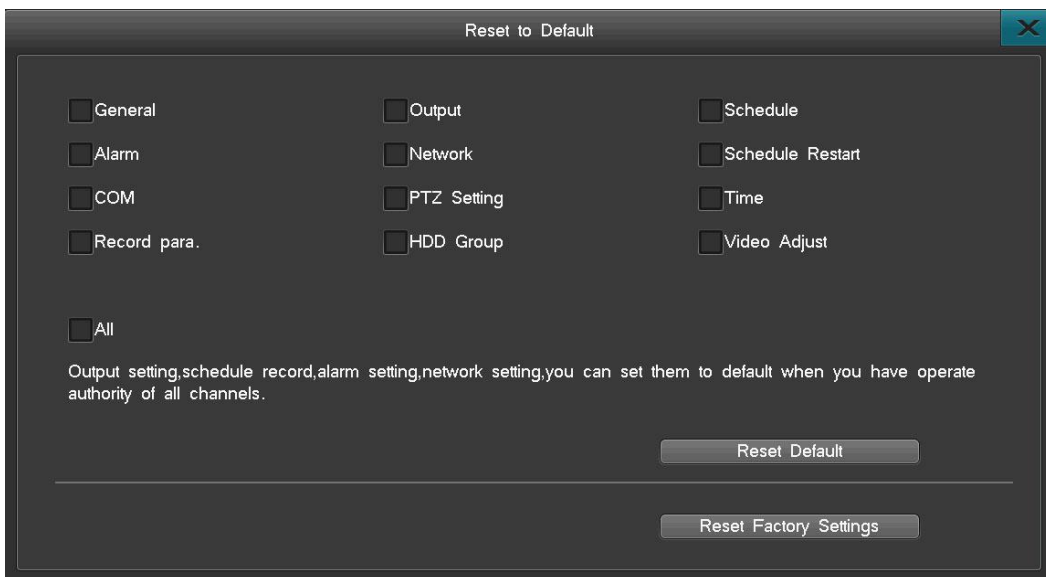


User Account Management:

- Add/delete user account: Click “Add” to add an account to the User Account List. Click “Delete” to delete an account.
- To edit the password: Click “Edit” to change the password.
- Supports MAC and IP address binding; when set, only the PC with specific MAC address can remote access the device.

6.9.3. Factory Default Settings

To reset to factory settings: choose an individual category or categories to be reset, or reset all for full reset.



6.9.4. Upgrade

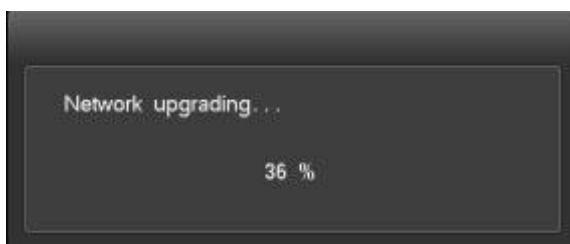
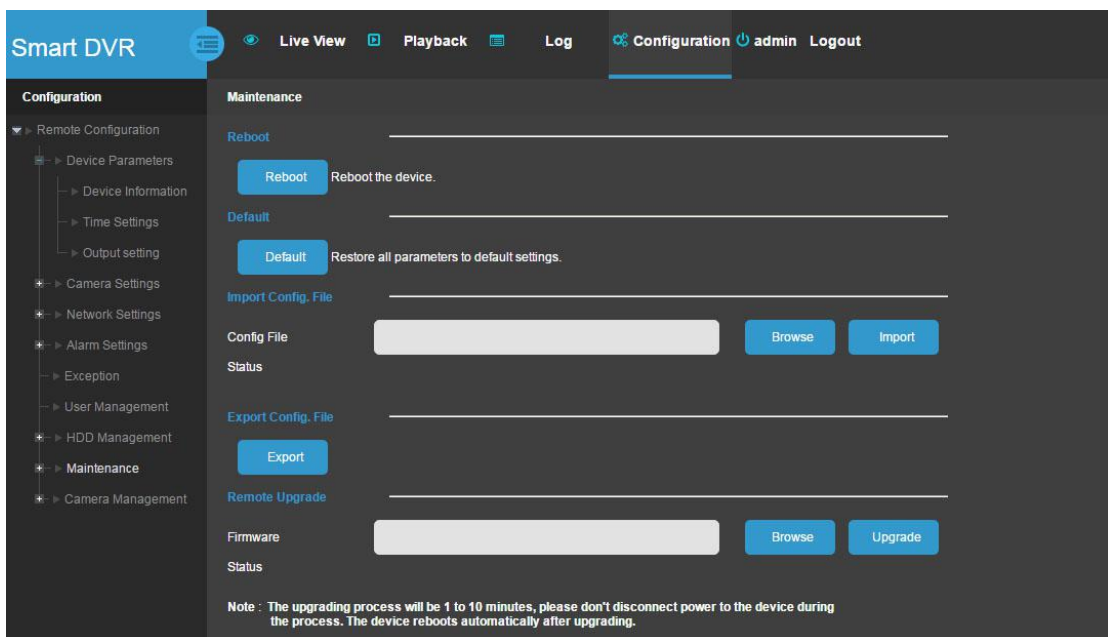
- Before upgrading firmware, please backup important video files and data. Note the current firmware version in order to restore it if the upgrade attempt fails. If you encounter any problem or do not need the new features of the newest version, then stop the upgrading process.
- Please ensure that the internet connectivity and the power supply are both stable before upgrading. Any connection failure or power outage occurred during the process will result in an upgrade failure.
- Before upgrading, please confirm that the file is compatible with your device. Please check the information such as device model and boot interface. If you are unsure about the compatibility, please do not execute the process.
- Please do not modify the firmware in any way. Support will not be provided if the firmware is modified.

There are three ways to upgrade the firmware (please read the instructions carefully):

- Upgrade through Web Browser.
- Upgrade via USB device.
- Upgrade via FTP.

6.5.1.1 Upgrade from Web Browser

- Type the IP address of the DVR in your browser. Login to the system.
- Click "Configuration" (top of screen), click "Maintenance" (from the list on the left) click "Browse" to upload the file "Upgrade.bin"
- Click "Upgrade" After successfully upgrading, the admin password will reset back to default.



6.9.4.2 Upgrade via USB Device

The upgrade steps are as follows:

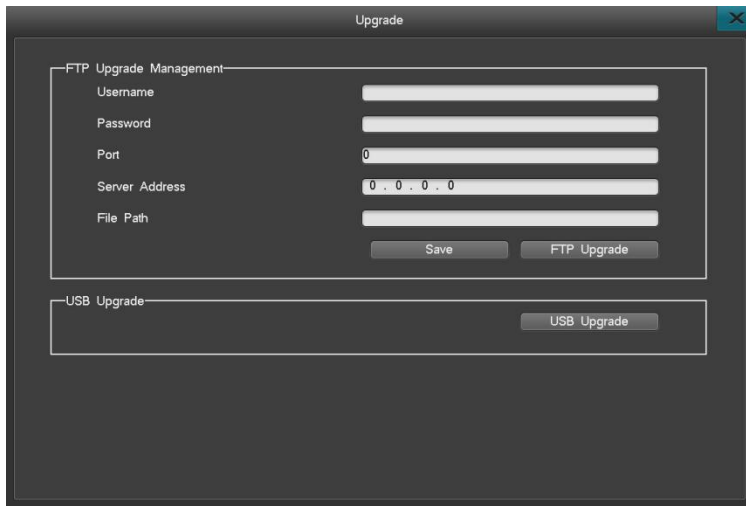
- Copy the upgrade.bin file into the root directory of the USB/flash drive. The flash drive must be in FAT32 format.
- Connect the flash drive to the DVR, the DVR will pop-up a message, confirm it.
- After upgrading successfully, the device will pop up a message box displaying “Local Upgrade Complete”. The device will restart.
- After successfully upgrading, the admin password will reset back to default.

6.9.4.3 Upgrade via FTP

The upgrade steps are as follows:

- Double-click the FTP server software on your computer and follow the Start-up Guide to establish an account name and password on the server.
- Designate a root directly on the hard drive where the upgrade file is located, set up the access ability for each account (access to downloading must be set up).
- After finishing the setup process, the system automatically directs you to the server settings to set up the server IP address and server port.
- Turn on the FTP service.

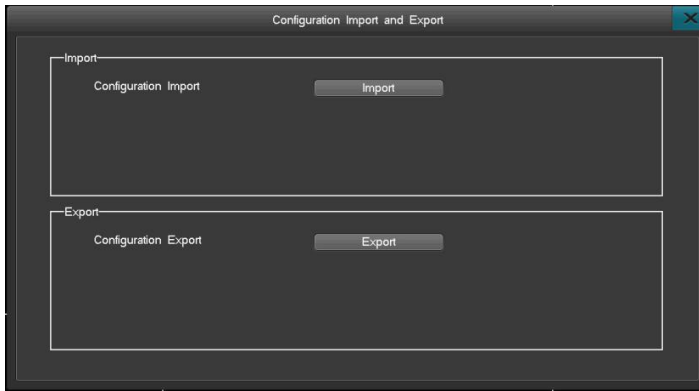
Left-click on “System Maintenance” at the main menu, select “Upgrade via FTP” under “Upgrade Management”, as shown below:



- Enter the FTP server information.
- Save the settings and click FTP upgrade.

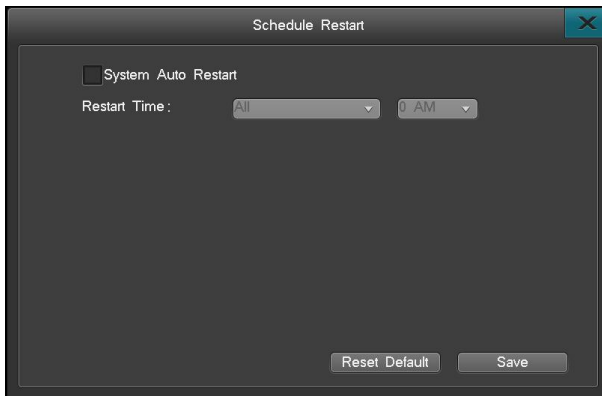
6.9.5. Import and Export

This function allows users to copy all settings from one DVR to another DVR. An external USB drive is required to save the setting.



6.9.6. Schedule Restart

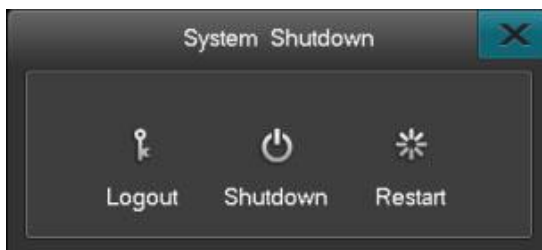
Click "Main menu" → "System Maintenance" → "Schedule Restart" to enter the interface of 'Scheduled Restart', as shown below:



To enable schedule restart, click the 'Scheduled Auto Restart' box and save the setting. When it's time to restart the device, a notice will display "It is now time for a scheduled reboot, do you want to reboot the device now." Click on "Yes" to confirm restart or "No" to cancel it. The system will automatically reboot itself after 20 minutes if no choice is made.

6.9.7. System Shutdown

Click "Main menu" → "System maintenance" → "System Shutdown" to log out and power off or restart the device. The interface is as shown below:



- Logout: This option will logout the user and locks down the device.
- Shutdown: select "Shutdown", and select "Yes" at the pop-up window to shut down the system.

- Restart: click “Restart”, the system will restart.

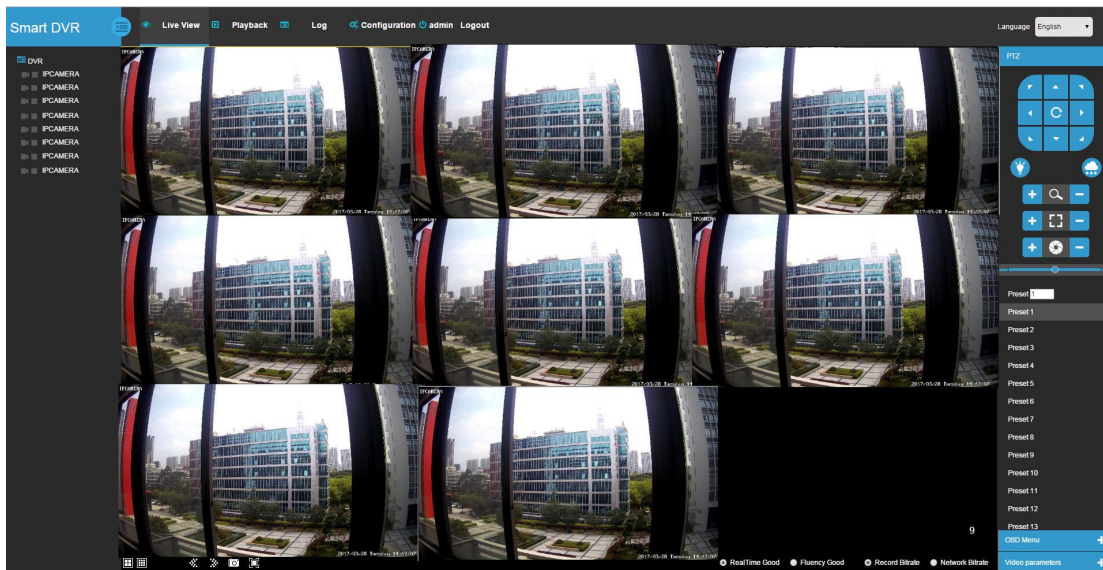
7. Introduction to Web View

Please Note: Set the firewall security level to low or medium if error occurs

Disable or uninstall any browser addons, if the web interface is not behaving as should.

Please make sure DirectX9.0 is installed. Internet Explorer version 6.0 or newer and Adobe Flash Player is required.

(A) Access the device via LAN



1. From a computer or laptop on the same network as the DVR, bring up a command prompt (terminal if using a Mac). Ping the DVR’s IP address (see 6.6.4) to make sure it is accessible.

2. The DVR and PC should to be in the same IP segment, for example, their IP addresses should both be 192.168.0. XXX. If the DVR’s IP address is not on the same IP segment, for example 192.168.2.XXX, please make sure DHCP is enabled or manually change the DVR’s IP address to the same IP segment as the PC. (see 6.6.4). If the DVR and your PC is on the same IP segment but you cannot access the DVR, please consult your network administrator.

3. Enter the DVR’s IP address in the address bar on Internet Explore or a browser of your choosing in the format of “HTTP://(your IP address)” or “HTTP://(your IP address : the port number)”

(B) To access the device via WAN:

Method 1. If there's a static WAN IP address available, the user can assign the static IP to the DVR and access the DVR directly using the static IP address, from a browser, phone application or Client software. However, this is not recommended because the DVR does not have a firewall and direct Internet access opens the DVR to attacks.

Method 2. If there is PPPOE connection available, click “Menu”→“Internet Settings” →“PPPOE Settings” to enter the interface. Once all the information is entered, please use the IP address provided by your PPPOE provider to access the device.



Super DVR

Method 3. Port forward the device on the router, then connect through the WAN IP address using a browser, phone application or Client software.

SDE5100EDV2H(V2C)-G0407