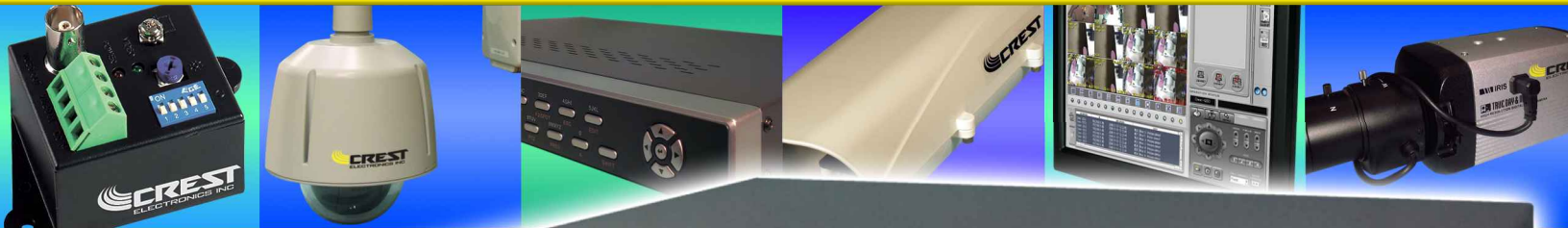


CQ-900

Analog Color Quad System

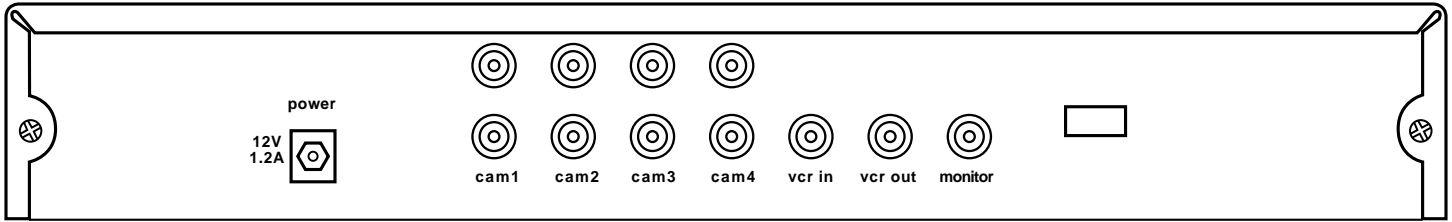


- Multiple display modes (single camera, quad, PIP, etc.)
- Picture freeze function for emergency situations
- Digital zoom
- OSD customization options
- Sequence mode for rotating camera images
- Multiple alarm options (video loss, motion, etc.)
- Function control via front panel and remote control

Contact your Crest Representative today
to learn more about this product!



Product Data: CQ-900 Analog Color Quad System



Rear Panel

Model Number	CQ-900
Product Description	Analog Color Quad System
Video Format	PAL: 50Hz; NTSC: 60Hz
Output Resolution	PAL: 720x576; NTSC: 720x480
Video Input	1.2V p-p / 75 ohm
Tape Input	1.2V p-p / 75 ohm
Tape Output	1.2V p-p / 75 ohm
Alarm Mode	Video loss, touch and start mode, motion detection
Video Display Mode	Full screen, digital zoom, quad, PIP and auto
Power Supply	12vDC
Power Consumption	1.2 amp
Operating Temperature	-22° to 140°F
Dimensions	13"w x 10 1/2"h x 2 1/4"d

Specifications subject to change

